



Road Running Technical Council
USA Track & Field

Measurement Certificate



Name of the course Tacoma City Marathon Distance 42.195 km
Location (state) WA (city) Tacoma
Type of course: Road Race
Measuring Methods: Bicycle
Measured By Tony Phillippi, 4815 N 49th St, Tacoma, WA 98407, tony@tcmaevents.com, 253-227-3545
Race Contact Tony Phillippi, 4815 N 49th St, Tacoma, WA 98407, tony@tcmaevents.com, 253-227-3545
Date(s) when course measured: 4/7/2022,4/23/2022
Number of measurements of entire course: 2 Course Configuration: Series of loops and out and back
Elevation (meters above sea level) Start 79.85 Finish 2.13 Lowest 2.13 Highest 123.44
Straight line distance between start and finish 6373m Drop 1.84 m/km Separation 15.10 %
Type of surface: Paved 98 % Dirt 0 % Gravel 0.5 % Grass 1.5 % Track 0 %
Effective date of certification: April 26, 2022 Certification code: WA22005RMB

Note to Race Director: Use this Certification Code in all public announcements relating to your race.

Be It Officially Noted That

Based on examination of data provided by the above named measurer, the course described above and in the map attached is hereby certified as reasonably accurate in measurement according to the standards adopted by the Road Running Technical Council. If any changes are made to the course, this certification becomes void, and the course must then be recertified.

Verification of Course --- In the event a National Open Record is set on the course, or at the discretion of USA Track & Field, a verification measurement may be required to be performed by a member of the Road Running Technical Council. If such a remeasurement shows the course to be short, then all pending records will be rejected and the course certification will be cancelled.

This certification expires on December 31 of the year: 2032

AS NATIONALLY CERTIFIED BY:

Date: April 26, 2022

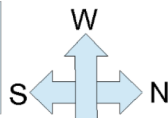
Bob Brennand - USATF/RRTC Certifier - 4113 Banbridge Loop SE, Olympia WA 98501
(360) 310-0747 - bobbrennand@comcast.net



USATF Certificate

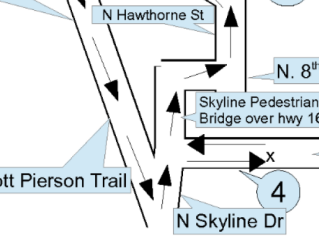
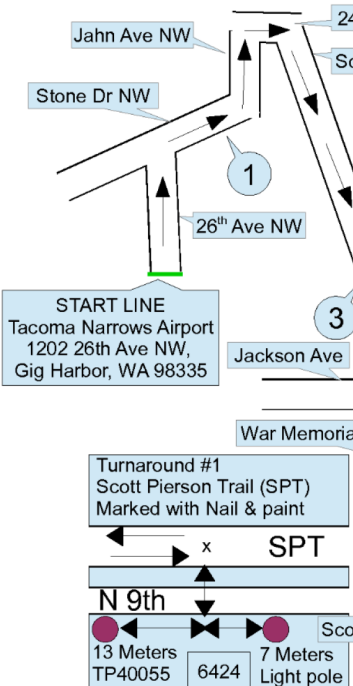
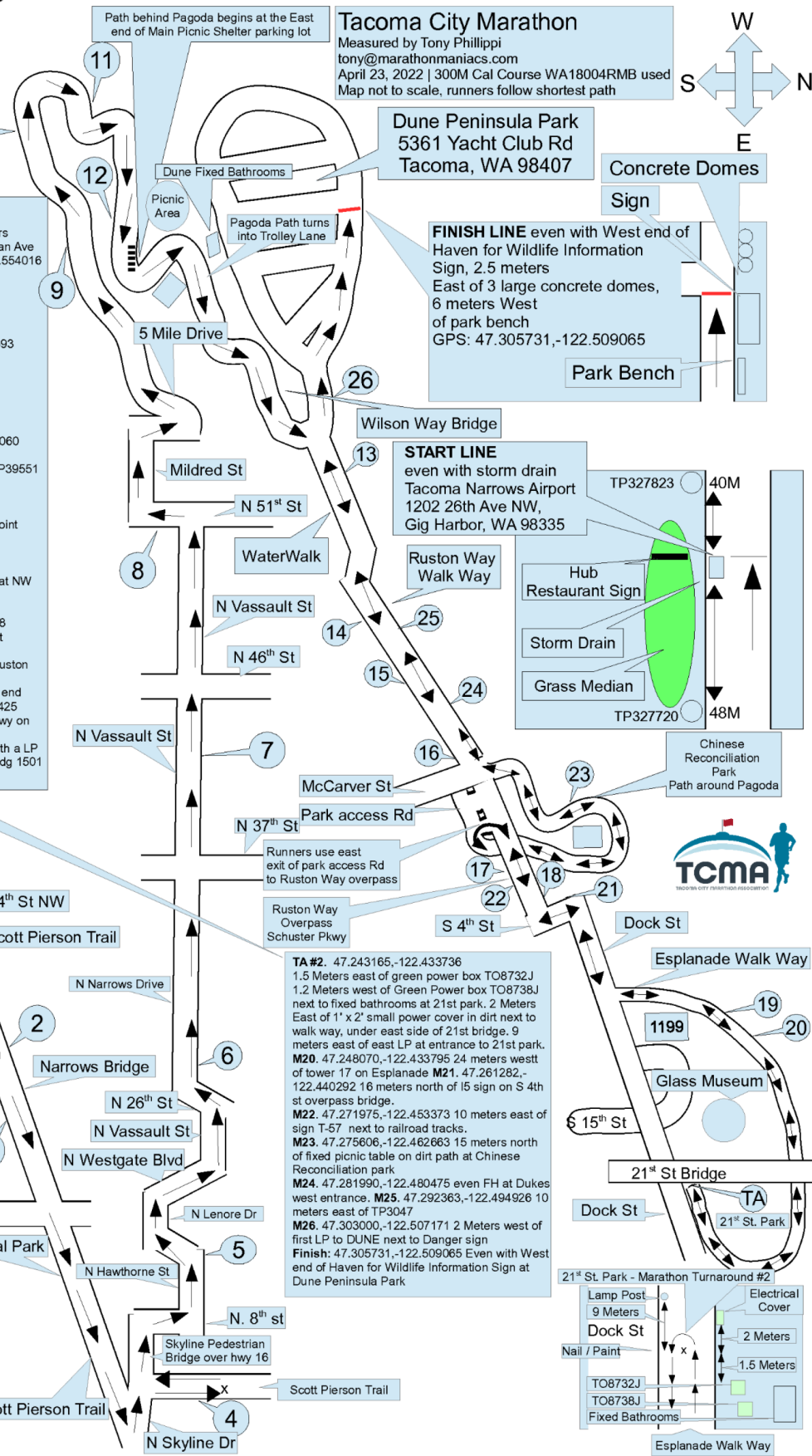
WA22005RMB
 Effective: 04/26/2022
 Through: 12/31/2032

Tacoma City Marathon
 Measured by Tony Phillippi
 tony@marathonmaniacs.com
 April 23, 2022 | 300M Cal Course WA18004RMB used
 Map not to scale, runners follow shortest path



Start: GPS 47.269014,-122.573774
 40 meters South of TP327823 48 meters North of TP327720 **M1** GPS 47.277104,-122.563580 16 meters west of TP PLCP628PLC 2375 20 Meters west of Jhan Ave NW street sign on Stone dr **M2** GPS 47.270424,-122.554016 25 meters west of Pole SCB2941SL
M3 GPS 47.259428,-122.539999
 24 meters west of Welcome to Tacoma sign
M4 GPS 47.258061,-122.5239344 meters west of TP40055 on SPT 17 Meters west of Turnaround **TA#1** GPS 47.258050,-122.523693 Across from 6424 N 9th on SPT 7 Meters East of Light pole at entrance to 6424 bldg. 13 meters south of TP40055
M5 GPS 47.264651,-122.527750 8 meters West of TP26251 **M6** GPS 47.272483,-122.523738 even with 2nd LP from corner of Narrows dr & 21st st. On Narrows dr. **M7** GPS 47.286732,-122.521060 even with TP1751 in front of house 4109 Vassault st.
M8 GPS 47.298243,-122.525532 2 meters north of TP39551 on 51st st **M9** GPS 47.306643,-122.534438 Corner of Cutoff rd. & 5 mile drive rd in Pt Defiance 10. GPS 47.317070,-122.548836
M10 meters north of mile 3 post at Gig Harbor view point **M11** GPS 47.311882,-122.532513 90 meters east of FH23 **M12** GPS 47.307542,-122.520492 20 meters east of fixed bathrooms on 5 mile dr.
M13 47.301107,-122.505804 even with large bolder at NW corner of 5125 Bldg. Silver Cloud Hotel
M14 47.293601,-122.497125 5 meters East of TP3063 on Ruston Way **M15** 47.283303,-122.482558 Between stall 9 and 10 from west end of parking lot at Les Davis Pier Park **M16** 47.275611,-122.464117 72 meter east of fixed bathrooms on McCarver and Ruston Way on walk way to Chinese Reconciliation park.
M17 47.272762,-122.455237 80 meters east of west end grass median on Schuster **M18** 47.261695,-122.441425 Even with first Lightpole East of S. 4th & Schuster Pkwy on Schuster Pkwy **M19** 47.249408,-122.433999 5 meters East of west end of the two park benches with a LP between them, located 19 meters from west end of Bldg 1501 Dock St on Esplanade.

Continued



TA #2: 47.243165,-122.433736
 1.5 Meters east of green power box TO8732J
 1.2 Meters west of Green Power box TO8738J next to fixed bathrooms at 21st park. 2 Meters East of 1' x 2' small power cover in dirt next to walk way, under east side of 21st bridge. 9 meters east of east LP at entrance to 21st park. **M20.** 47.248070,-122.433795 24 meters west of tower 17 on Esplanade **M21.** 47.261282,-122.440292 16 meters north of I5 sign on S 4th st overpass bridge.
M22. 47.271975,-122.453373 10 meters east of sign T-57 next to railroad tracks.
M23. 47.275606,-122.462663 15 meters north of fixed picnic table on dirt path at Chinese Reconciliation park
M24. 47.281990,-122.480475 even FH at Dukes west entrance. **M25.** 47.292363,-122.494926 10 meters east of TP3047
M26. 47.303000,-122.507171 2 Meters west of first LP to DUNE next to Danger sign
Finish: 47.305731,-122.509065 Even with West end of Haven for Wildlife Information Sign at Dune Peninsula Park

