



Road Running Technical Council  
USA Track & Field

Measurement Certificate



Name of the course Walt Disney World Half Marathon Distance 21.0975km

Location (state) FL (city) Lake Buena Vista

Type of course: Road Race

Measuring Methods: Bike

Measured By Toni Youngman (IAAF-A), Tom Ward (IAAF-B), 1013 Montana Street, Orlando FL 32803, 407-761-4918, tom

Race Contact Jon Hughes, 1013 Montana Street, Orlando FL 32803, 407-896-1160, jon@trackshack.com

Date(s) when course measured: 11/19/2019

Number of measurements of entire course: 2 Course Configuration: loop

Elevation (meters above sea level) Start 30m Finish 29m Lowest 22m Highest 36m

Straight line distance between start and finish 542m Drop 0.05 m/km Separation 2.57 %

Type of surface: Paved 100 % Dirt 0 % Gravel 0 % Grass 0 % Track 0 %

Effective date of certification: December 31, 2019 Certification code: FL20003JK

Note to Race Director: Use this Certification Code in all public announcements relating to your race.

Be It Officially Noted That

Based on examination of data provided by the above named measurer, the course described above and in the map attached is hereby certified as reasonably accurate in measurement according to the standards adopted by the Road Running Technical Council. If any changes are made to the course, this certification becomes void, and the course must then be recertified.

Verification of Course --- In the event a National Open Record is set on the course, or at the discretion of USA Track & Field, a verification measurement may be required to be performed by a member of the Road Running Technical Council. If such a remeasurement shows the course to be short, then all pending records will be rejected and the course certification will be cancelled.

This certification expires on December 31 of the year: **2030**

AS NATIONALLY CERTIFIED BY:

Date: January 8, 2020

Justin Kuo - USATF/RRTC Certifier - 39 Oakland Rd, Brookline MA 02445  
(617) 487-4463 - jkuo+certifier@usatfne.org



# Walt Disney World Half Marathon

## KEY POINTS

### Supplemental Page 1 of 12

**START** IS ON THE SOUTH SIDE OF EPCOT CENTER DRIVE (ECD) WESTBOUND, FACING WEST. POINT IS 68' WEST OF LINE WITH LP E75 AND 107' EAST OF LINE WITH LP E77.

**FINISH** IS IN THE EPCOT IMAGINE PARKING LOT, FACING NORTHEAST. POINT IS 200' EAST OF THE EXIT LANE OF THE PARKING LOT AT THE SOUTH SIDE OF PARKING ROW 60, AT THE 18<sup>TH</sup> PARKING SPACE FROM THE WEST END OF THE ROW, AND 6 FEET NORTH OF THE SOUTH EDGE OF THE SOLID LINE OF THE ROW.

**1 MILE** IS ON THE NORTH SIDE OF ECD WESTBOUND, FACING WEST. POINT IS 75.2' EAST OF (BEFORE) PURPLE AND RED SIGN 'BLIZZARD BEACH WATERPARK, DISNEY'S ANIMAL KINGDOM, DISNEY'S ANIMAL KINGDOM RESORT AREA, STRAIGHT AHEAD', WHERE ECD IS A SINGLE LANE.

**2 MILE** IS ON THE WEST SIDE OF WORLD DRIVE NORTHBOUND, FACING NORTH. POINT IS 189.2' SOUTH OF (BEFORE) SIGN 'FORT WILDERNESS CAMPGROUND, LBV GOLF, BEST FRIEND PET CARE, RIGHT LANE'.

**3 MILE** IS ON THE MAGIC KINGDOM PARKING LOT PERIMETER ROAD, ON THE NORTHEAST CORNER OF THE INTERSECTION OF THE SOUTH PERIMETER ROAD FROM CRUELLA LOT AND THE MAIN PERIMETER ROAD, FACING NORTH.

**5K** IS ON THE WEST SIDE OF MAGIC KINGDOM PARKING LOT PERIMETER ROAD, BETWEEN THE CRUELLA LOT AND THE HOOK LOT, FACING NORTH. POINT IS 5' NORTH OF (AFTER) SIGN 'CRUELLA 427-433' JUST SOUTH OF THE CANAL.

**4 MILE** IS ON THE WEST SIDE OF WORLD DRIVE, FACING NORTH. POINT IS 35.4' NORTH OF (AFTER) THE MEDIAN TIP AT THE INTERSECTION OF TOPIARY LANE AND WORLD DRIVE.

**5 MILE** IS IN WDW MAGIC KINGDOM, FACING EAST. POINT IS 38' EAST OF THE HUB HEADING TOWARDS TOMORROWLAND, ON THE TOMORROWLAND BRIDGE.

**6 MILE** IS ON THE EAST SIDE OF FLORIDIAN WAY, FACING SOUTH. POINT IS 19.2' SOUTH OF 40 MPH SIGN JUST SOUTH OF CARRIBEAN WAY AND FLORIDIAN WAY INTERSECTION.

**10K** IS ON THE EAST SIDE OF FLORIDIAN WAY, FACING SOUTH. POINT IS 48.2' SOUTH OF (AFTER) STOP BAR AT INTERSECTION OF FLORIDIAN WAY AND FLORIDIAN PLACE.

**7 MILE** IS ON THE WEST SIDE OF FLORIDIAN WAY, FACING SOUTHEAST. POINT IS 69.8' NORTH OF (BEFORE) POLYNESIAN SERVICE ROAD PAINTED CROSSWALK

**8 MILE** IS ON THE NORTH SIDE OF FLORIDIAN WAY, FACING EAST. POINT IS 112.4' NORTH OF (BEFORE) SECOND PAINTED MERGE ON FLORIDIAN WAY, AT THE SOUTH END OF THE MERGE LANE.

**9 MILE** IS ON THE WEST SIDE OF WORLD DRIVE SOUTHBOUND, FACING SOUTH. POINT IS 265' SOUTH OF SIGN 'DISNEY SPRINGS RESORT AREA, TYPHOON LAGOON WATER PARK, OLD KEY WEST, PORT ORLEANS, SARATOGA SPRINGS, LBV GOLF COURSE, NEXT RIGHT'.

**15K** IS ON THE WEST SIDE OF WORLD DRIVE SOUTHBOUND, FACING SOUTH. POINT IS 24.4' NORTH OF (BEFORE) SIGN 'EPCOT (WITH AN ARROW FACING THE 2 O'CLOCK POSITION), DISNEY HOLLYWOOD STUDIOS (WITH AN ARROW IN THE 12 O'CLOCK POSITION) AND DISNEY'S ANIMAL KINGDOM (WITH AN ARROW IN THE 12 O'CLOCK POSITION).

**10 MILE** IS ON EXIT RAMP FROM WORLD DRIVE SOUTHBOUND TO EPCOT CENTER DRIVE EASTBOUND, FACING NORTHEAST. POINT IS 122.2 FEET NORTH OF (AFTER) LIGHT POLE E154.

**11 MILE** IS ON THE SOUTH SIDE OF EPCOT CENTER DRIVE EASTBOUND, FACING EAST. POINT IS 282 FEET WEST OF (BEFORE) EAST END OF GRASS MEDIAN SEPARATING EPCOT CENTER DRIVE AND EXIT FROM THE DISCOVER LOT BRIDGE.

**TURNAROUND** IS IN THE CENTER OF ECD EASTBOUND, STARTING ON THE NORTH SIDE GOING EAST AND ROLLING TO THE SOUTH SIDE GOING WEST (NAIL IS ON THE SOUTH SIDE OF THE ROAD). POINT IS 145' EAST OF GRASS/ASPHALT INTERSECTION OF DISCOVER BRIDGE. POINT IS 14' WEST OF (BEFORE) LINE WITH LP E104.

**12 MILE** IS ON THE NORTH SIDE OF AVENUE OF THE STARS, FACING EAST. POINT IS 78' WEST OF (BEFORE) CENTER OF DOUBLE DOOR TO PARK EVENT OPERATIONS BUILDING (W401).

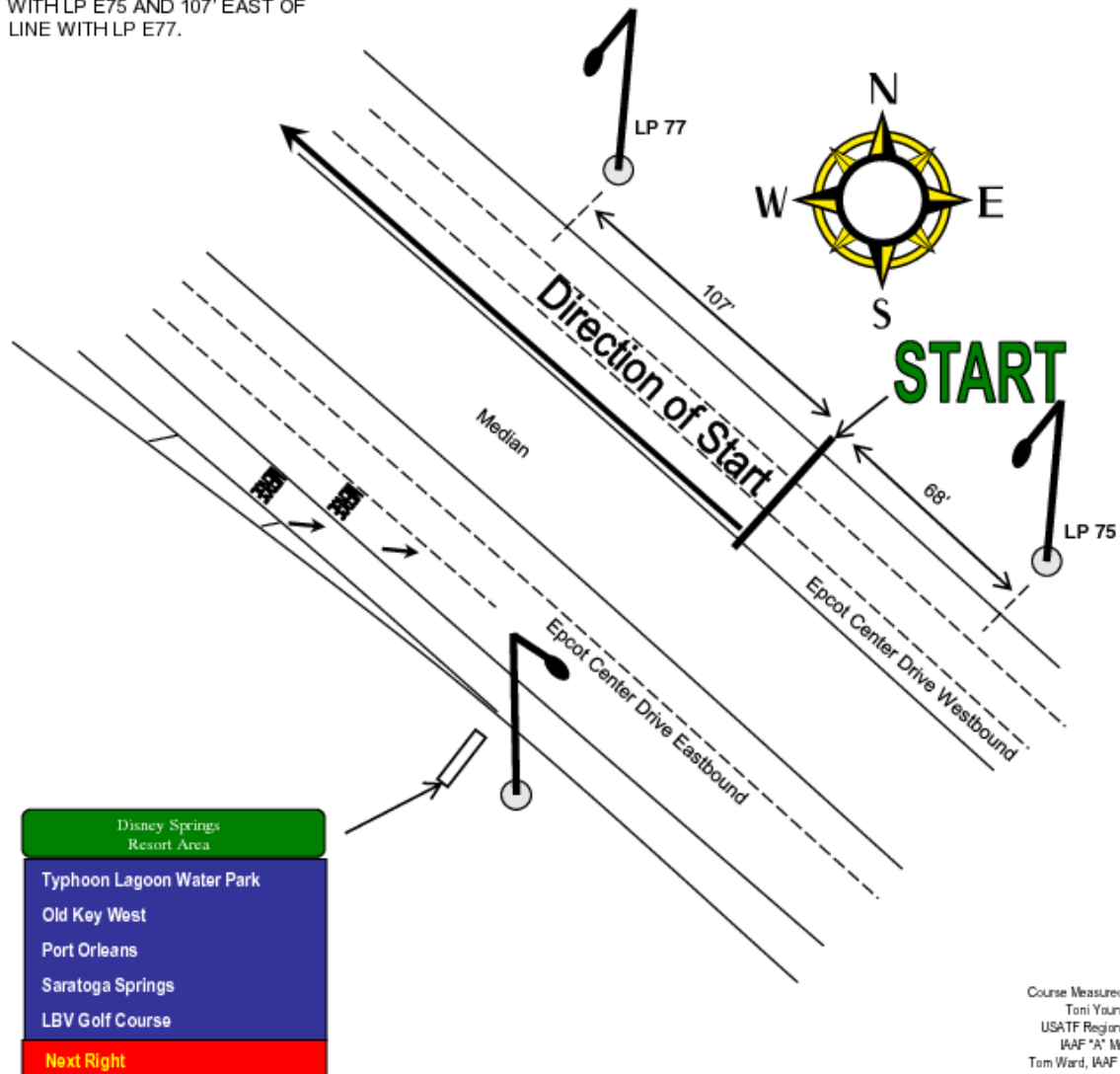
**20K** IS IN EPCOT, ON THE NORTH PATH OF WORLD SHOWCASE, FACING EAST. POINT IS 3.5' WEST OF (BEFORE) CENTER OF JOFFREY'S 'ESPRESSO COFFEE AND PASTRIES KIOSK BETWEEN DISNEY TRADERS AND FRIENDSHIP BOAT LANDING AND BOARDING DOCK.

**13 MILE** IS AT EPCOT, IN THE TRAM LANE NORTH OF KENNEL GATE ACCESS ROAD, FACING NORTH. POINT IS 21' SOUTH OF SECURITY CAMERA LIGHT POLE AT THE WEST TIP OF THE TRAM TURNAROUND.

# Walt Disney World Half Marathon START Map

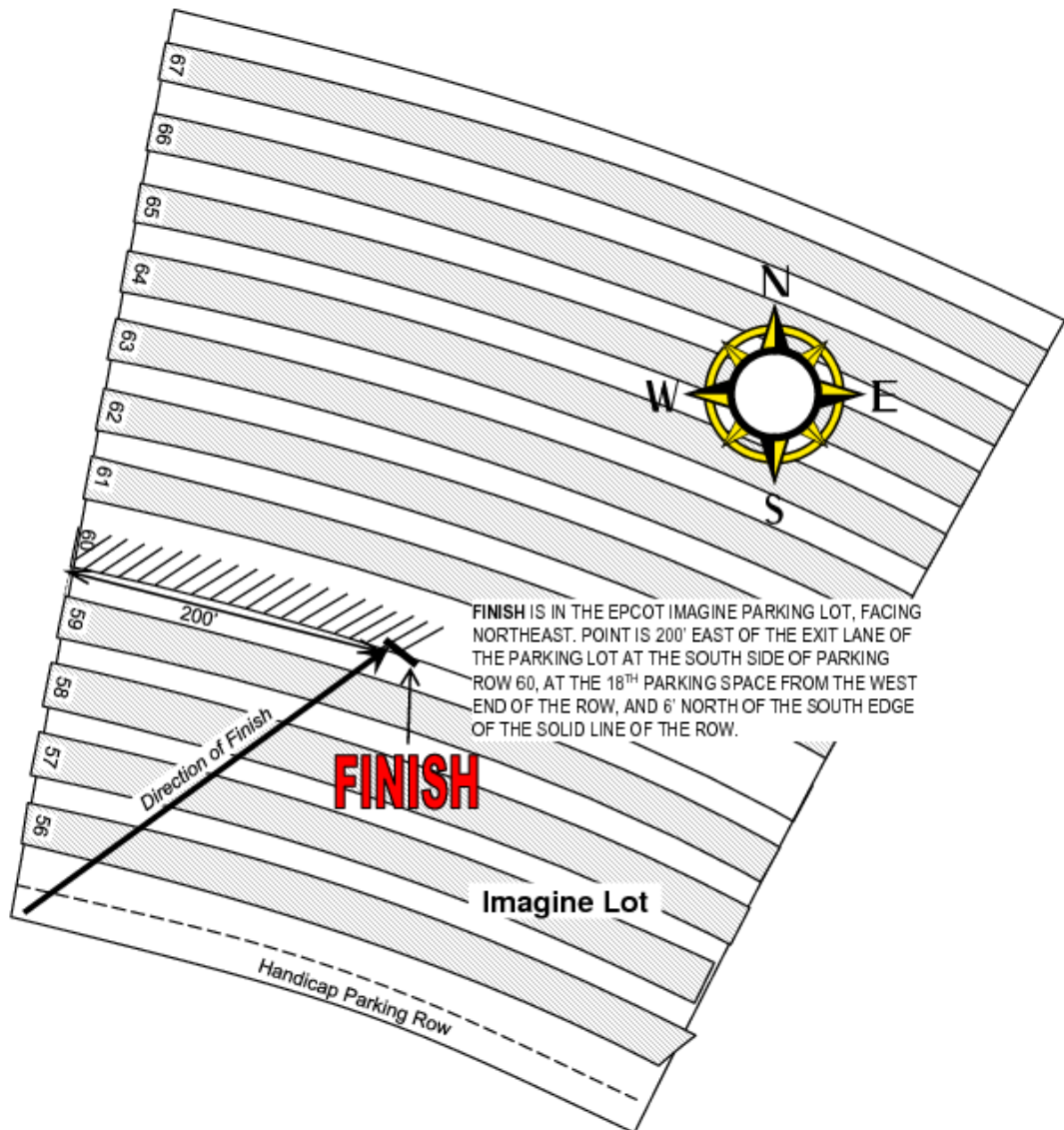
## Supplemental Map 2 of 12

**START** ON THE SOUTH SIDE OF  
EPCOT CENTER DRIVE  
WESTBOUND LANES, FACING  
WEST. POINT IS 68' WEST OF LINE  
WITH LP E75 AND 107' EAST OF  
LINE WITH LP E77.



# Walt Disney World Half Marathon **FINISH**

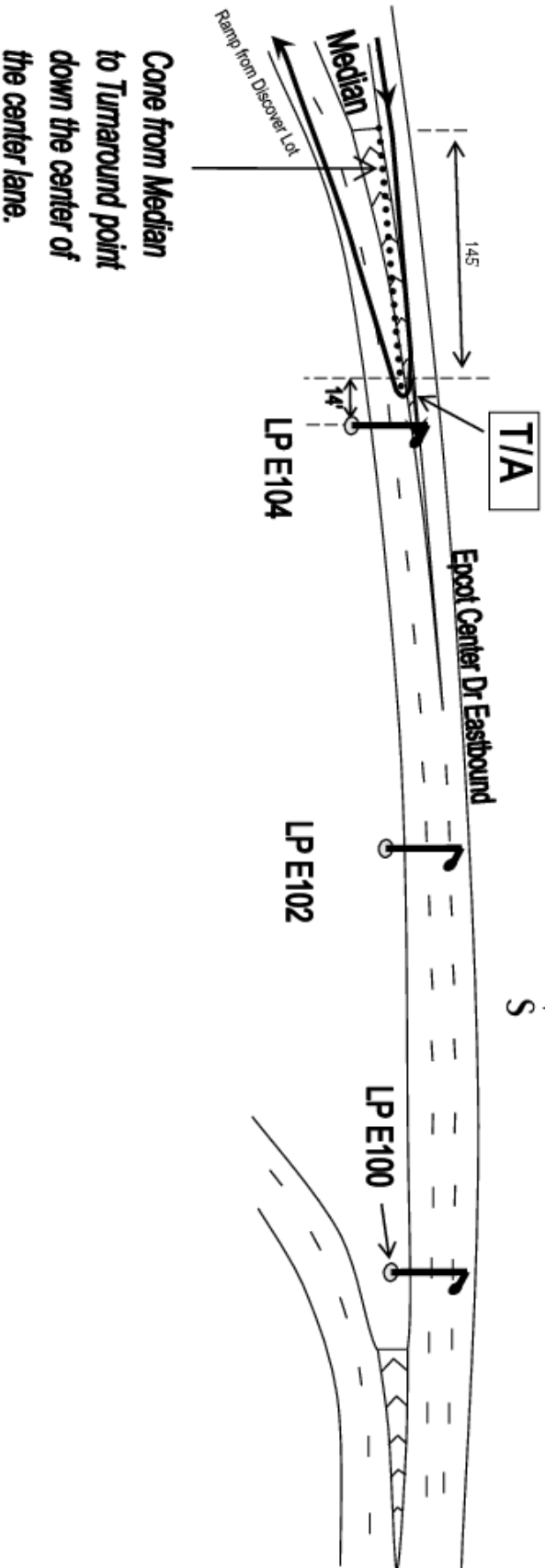
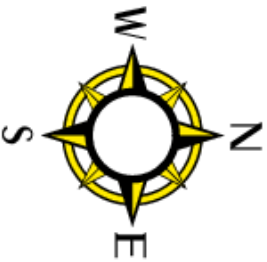
## Supplemental Map 3 of 12



# Walt Disney World Half Marathon TURNAROUND Map

Supplemental Map 4 of 12

TURNAROUND IS IN THE CENTER OF ECD EASTBOUND, STARTING ON THE NORTH SIDE GOING EAST AND ROLLING TO THE SOUTH SIDE GOING WEST (NAIL IS ON THE SOUTH SIDE OF THE ROAD). POINT IS 145' EAST OF GRASS/ASPHALT INTERSECTION OF DISCOVER BRIDGE. POINT IS 14' WEST OF (BEFORE) LINE WITH LP E104.



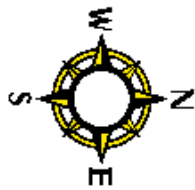
# Walt Disney World Half Marathon

Start to 1.4 Mile  
10.2 to 11.4 Mile

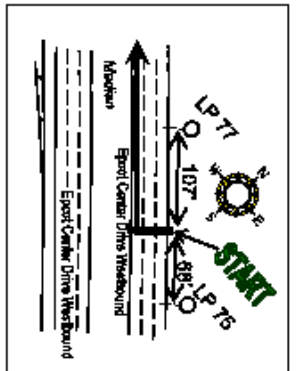
## Supplemental Map 5 of 12

**BLIZZARD BEACH WATER PLANK  
DISNEY'S ANIMAL KINGDOM RESORT AREA**

1 MILE IS ON THE NORTH SIDE OF ECD WESTBOUND, FACING WEST. POINT IS 73'-4" EAST OF (BEFORE) PURPLE AND RED SIGN - BLIZZARD BEACH WATERPARK, DISNEY'S ANIMAL KINGDOM, DISNEY'S ANIMAL KINGDOM RESORT AREA, STRAIGHT AHEAD\*, WHERE ECD IS A SINGLE LANE.



START IS ON THE SOUTH SIDE OF EPCOT CENTER DRIVE (ECD) WESTBOUND, FACING WEST. POINT IS 68' WEST OF LINE WITH LP E75 AND 107' EAST OF LINE WITH LP E7.



Come from the median to the middle of the middle lane. Runners stop to the left of center.

**START**

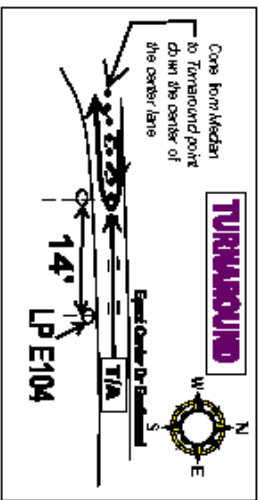
TURNAROUND IS IN THE CENTER OF ECD EASTBOUND, STARTING ON THE NORTH SIDE GOING EAST AND ROLLING TO THE SOUTH SIDE GOING WEST (NAIL IS ON THE SOUTH SIDE OF THE ROAD). POINT IS 145' EAST OF GRASS/ASPHALT INTERSECTION OF DISCOVER BRIDGE. POINT IS 14' WEST OF (BEFORE) LINE WITH LP E104.

Come on the west side of Right Lane. Lane stays open for Discovery and you may lots Exiting Traffic

11 MILE IS ON THE SOUTH SIDE OF EPCOT CENTER DRIVE EASTBOUND, FACING EAST. POINT IS 292 FEET WEST OF (BEFORE) EAST END OF GRASS MEDIAN SEPARATING EPCOT CENTER DRIVE AND EXIT FROM THE DISCOVER LOT BRIDGE.

Course Measured 11-18-89 by Tom Youngman

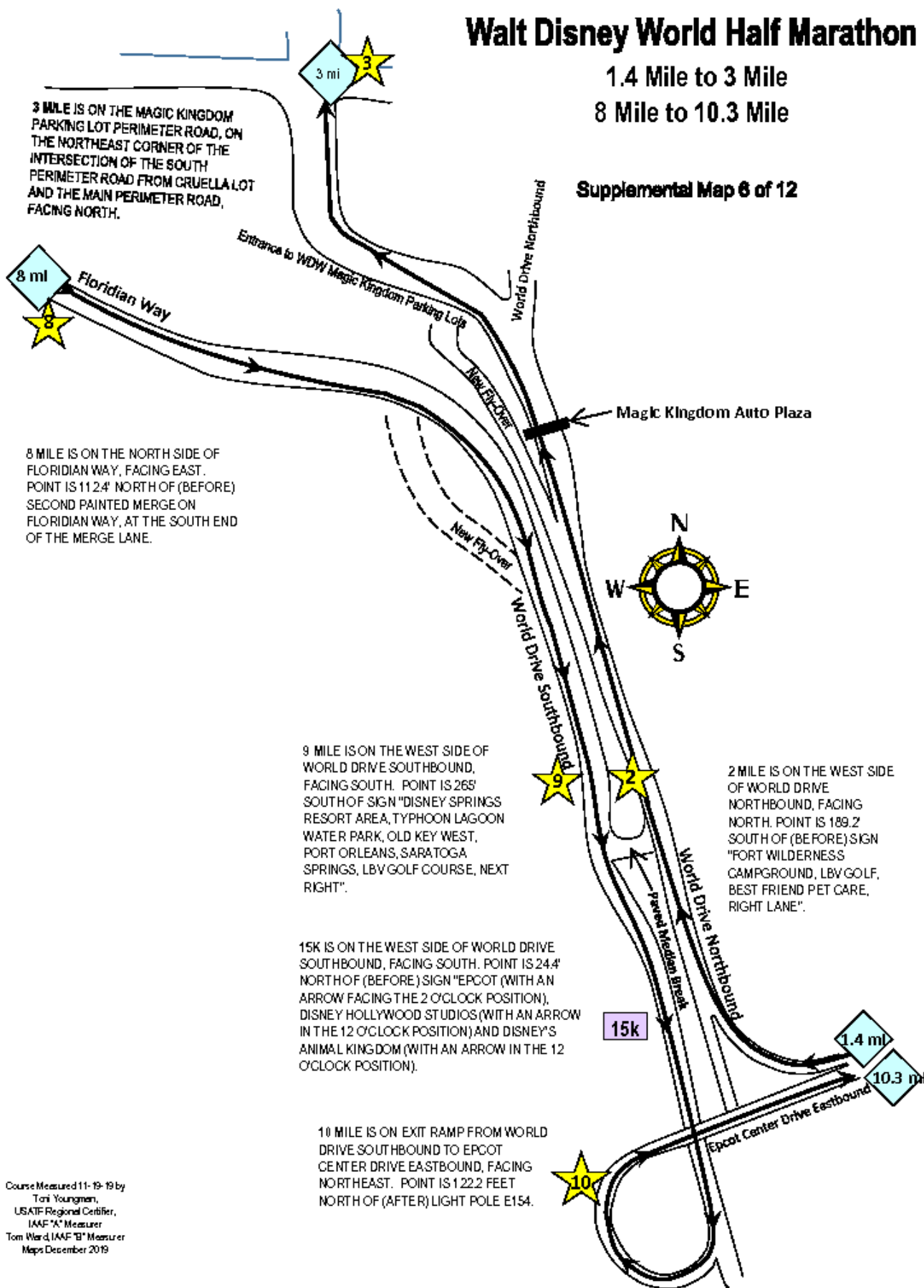
UBAAT Regional Center, IAAF '88 Measurer Tom Ward, IAAF '87 Measurer Maps December 2019



# Walt Disney World Half Marathon

1.4 Mile to 3 Mile  
8 Mile to 10.3 Mile

Supplemental Map 6 of 12

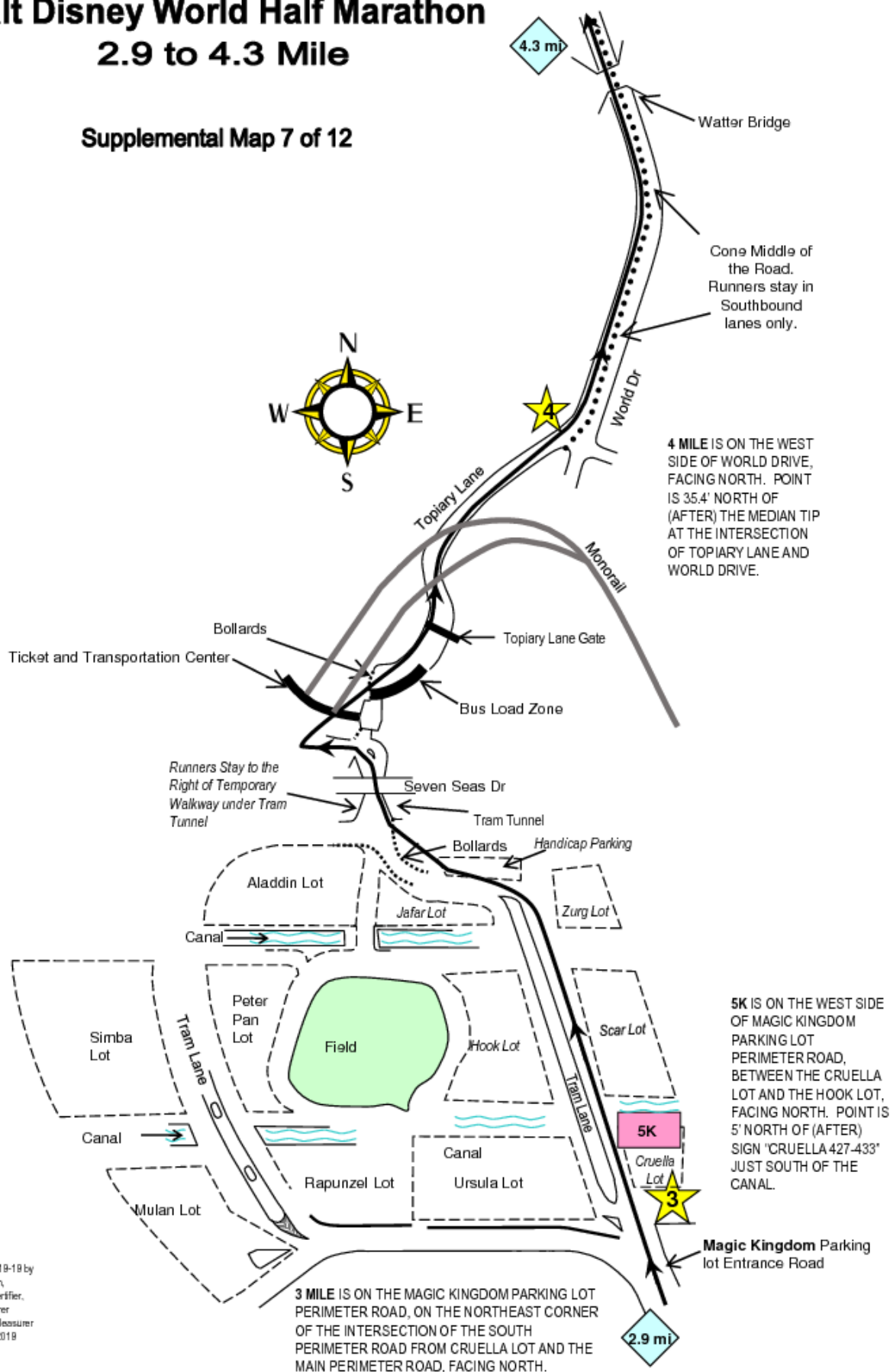


Course Measured 11-19-19 by  
Toni Youngman,  
USATF Regional Certifier,  
IAAF "A" Measurer  
Tom Ward, IAAF "B" Measurer  
Maps December 2019



# Walt Disney World Half Marathon 2.9 to 4.3 Mile

## Supplemental Map 7 of 12



Course Measured 11-19-18 by  
Toni Youngman,  
USATF Regional Certifier,  
IAAF 'A' Measurer  
Tom Ward, IAAF 'B' Measurer  
Maps December 2018

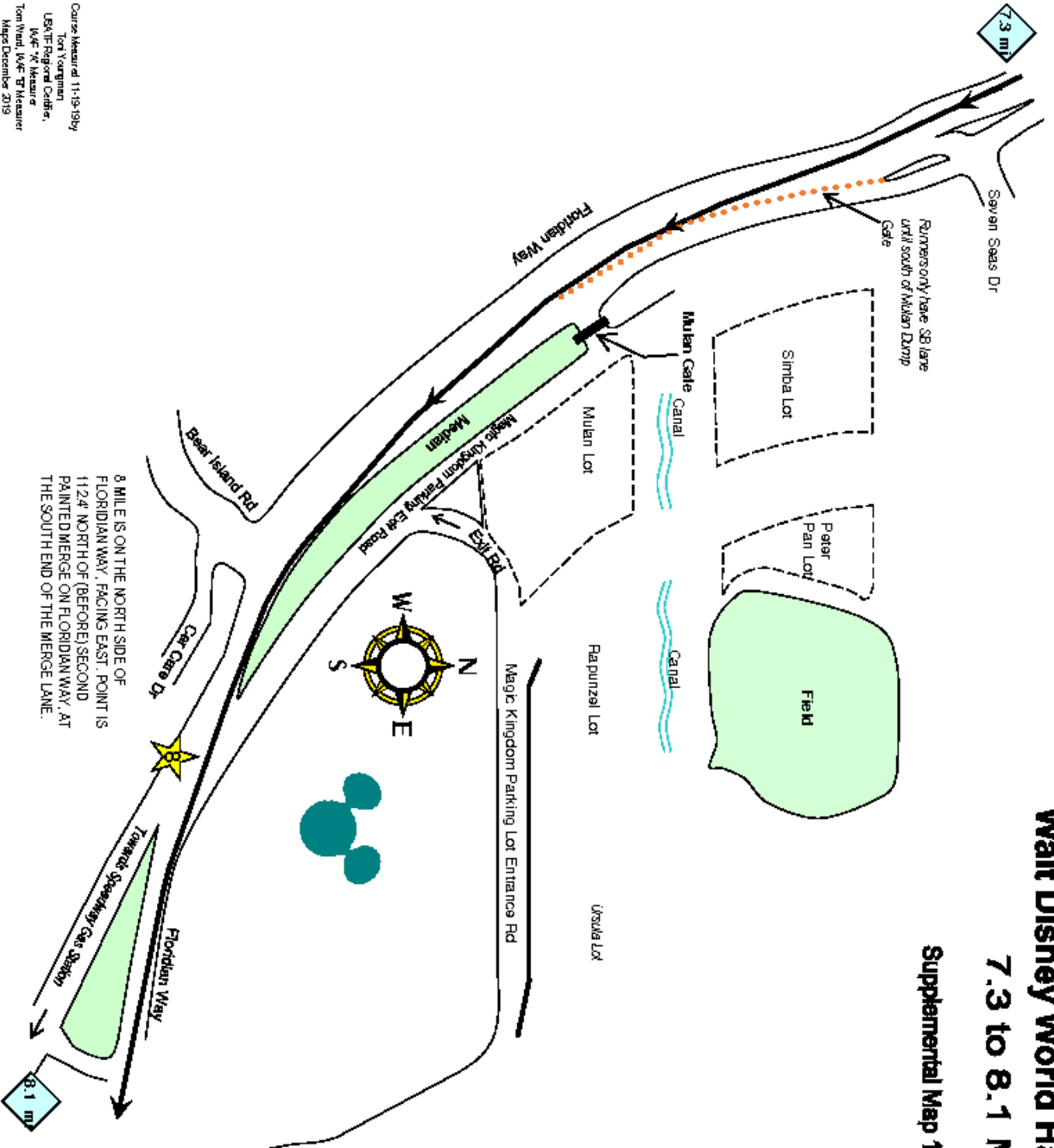




# Walt Disney World Half Marathon

## 7.3 to 8.1 Mile

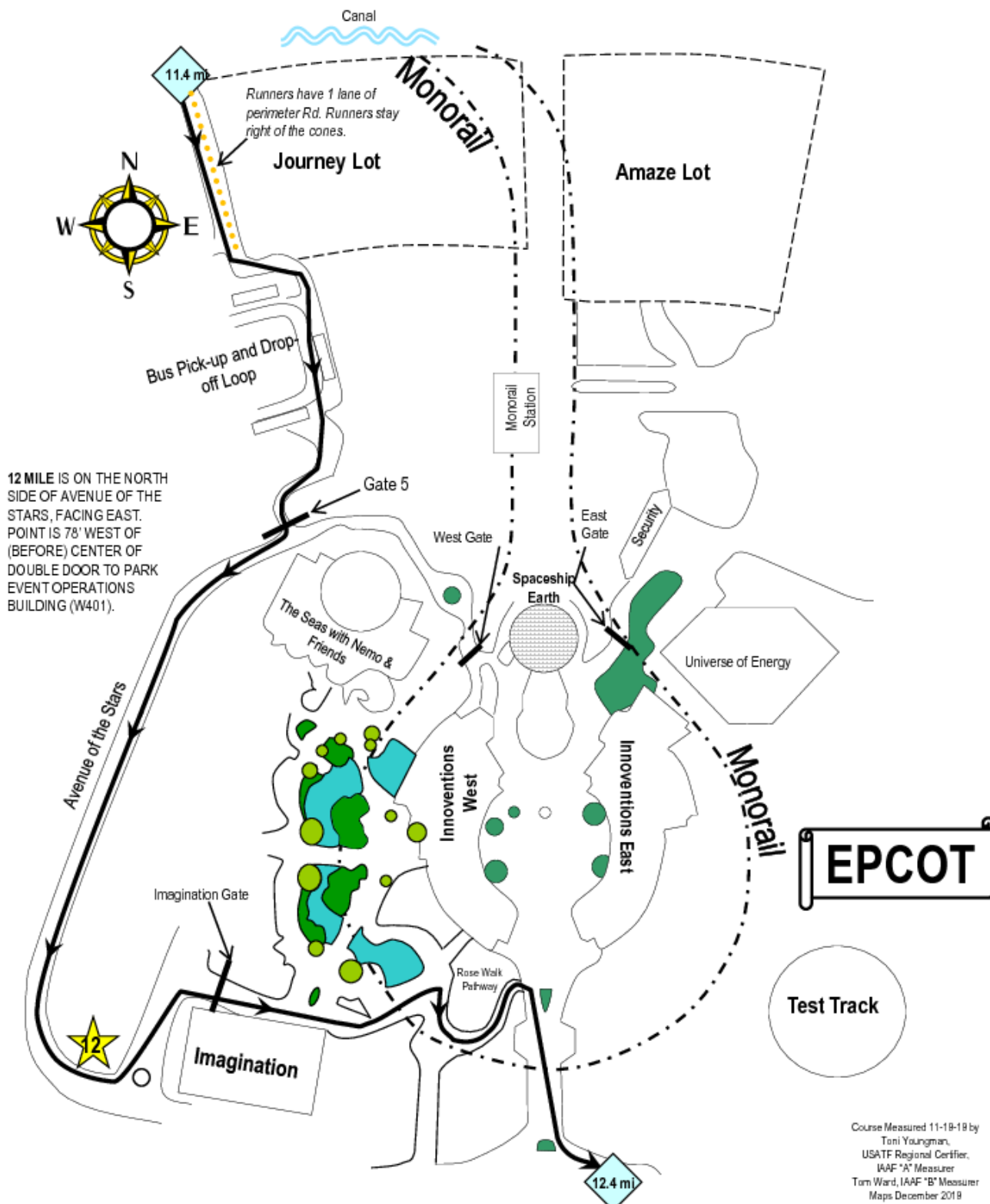
### Supplemental Map 10 of 12



# Walt Disney World Half Marathon

## 11.4 Mile to 12.4 Mile

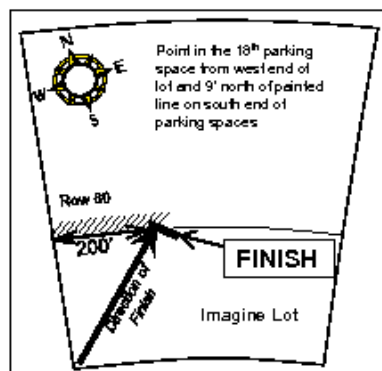
### Supplemental Map 11 of 12



# Walt Disney World Half Marathon

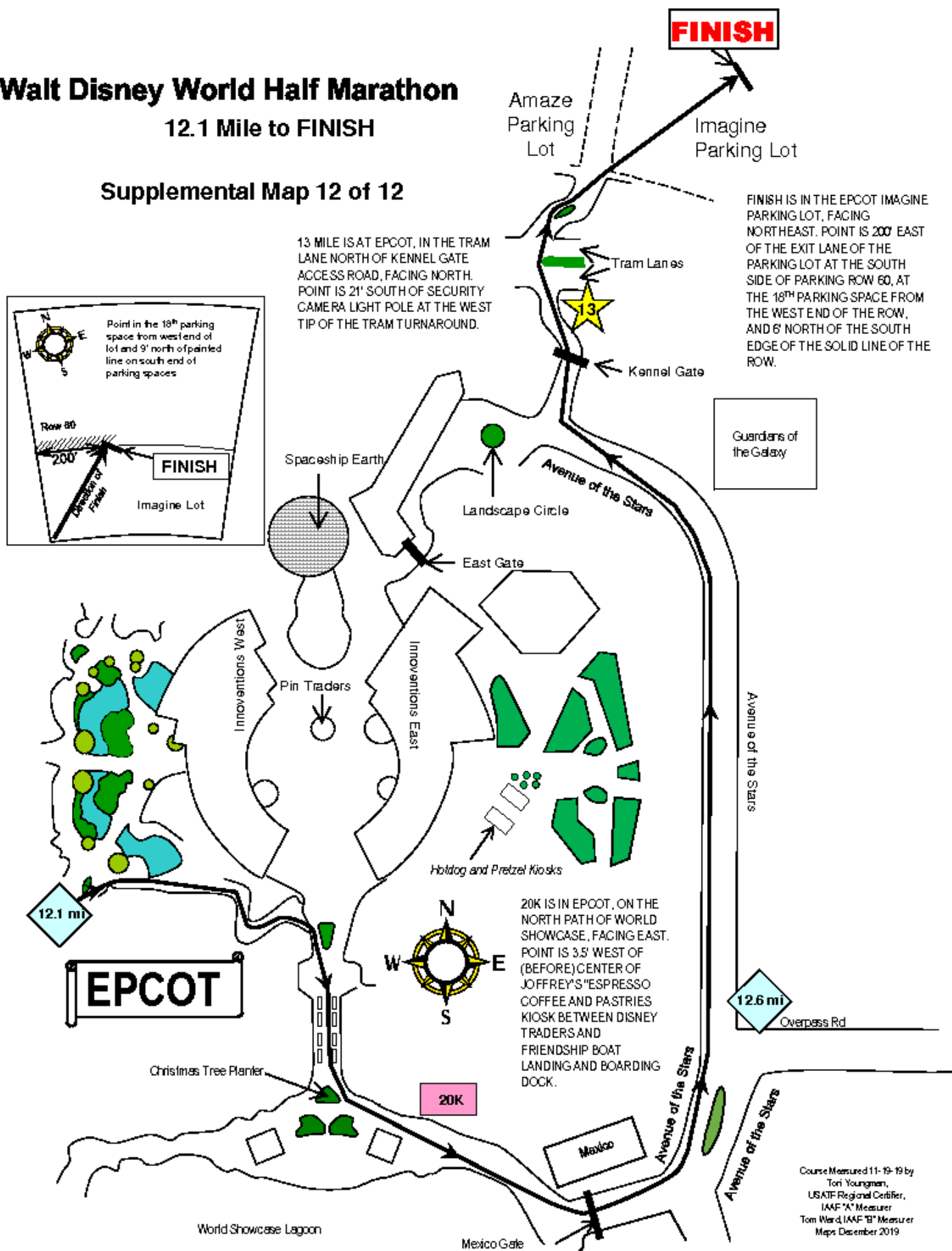
## 12.1 Mile to FINISH

### Supplemental Map 12 of 12



13 MILE IS AT EPCOT, IN THE TRAM LANE NORTH OF KENNEL GATE ACCESS ROAD, FACING NORTH. POINT IS 21' SOUTH OF SECURITY CAMERA LIGHT POLE AT THE WEST TIP OF THE TRAM TURNAROUND.

FINISH IS IN THE EPCOT IMAGINE PARKING LOT, FACING NORTHEAST. POINT IS 200' EAST OF THE EXIT LANE OF THE PARKING LOT AT THE SOUTH SIDE OF PARKING ROW 60, AT THE 18<sup>TH</sup> PARKING SPACE FROM THE WEST END OF THE ROW, AND 6' NORTH OF THE SOUTH EDGE OF THE SOLID LINE OF THE ROW.



20K IS IN EPCOT, ON THE NORTH PATH OF WORLD SHOWCASE, FACING EAST. POINT IS 3.5' WEST OF (BEFORE) CENTER OF JOFFREY'S ESPRESSO COFFEE AND PASTRIES KIOSK BETWEEN DISNEY TRADERS AND FRIENDSHIP BOAT LANDING AND BOARDING DOCK.

Course Measured 11-19-19 by  
Tori Youngman,  
USATF Regional Certifier,  
IAAF 'A' Measurer  
Tom Ward, IAAF 'B' Measurer  
Maps December 2019