



Road Running Technical Council
USA Track & Field

Measurement Certificate



Name of the course Epcot 10K Distance 10km

Location (state) FL (city) Lake Buena Vista

Type of course: Road Race

Measuring Methods: Bike

Measured By Toni Youngman (IAAF-A), Tom Ward (IAAF-B), 1013 Montana Street, Orlando FL 32803, 407-761-4918, tom

Race Contact Jon Hughes, 1013 Montana Street, Orlando FL 32803, 407-896-1160, jon@trackshack.co

Date(s) when course measured: 09/13/2019

Number of measurements of entire course: 2 Course Configuration: loop

Elevation (meters above sea level) Start 29m Finish 29m Lowest 25m Highest 31m

Straight line distance between start and finish 86m Drop 0 m/km Separation 0.86 %

Type of surface: Paved 100 % Dirt 0 % Gravel 0 % Grass 0 % Track 0 %

Effective date of certification: December 31, 2019 Certification code: FL20004JK

Note to Race Director: Use this Certification Code in all public announcements relating to your race.

Be It Officially Noted That

Based on examination of data provided by the above named measurer, the course described above and in the map attached is hereby certified as reasonably accurate in measurement according to the standards adopted by the Road Running Technical Council. If any changes are made to the course, this certification becomes void, and the course must then be recertified.

Verification of Course --- In the event a National Open Record is set on the course, or at the discretion of USA Track & Field, a verification measurement may be required to be performed by a member of the Road Running Technical Council. If such a remeasurement shows the course to be short, then all pending records will be rejected and the course certification will be cancelled.

This certification expires on December 31 of the year: **2030**

AS NATIONALLY CERTIFIED BY:

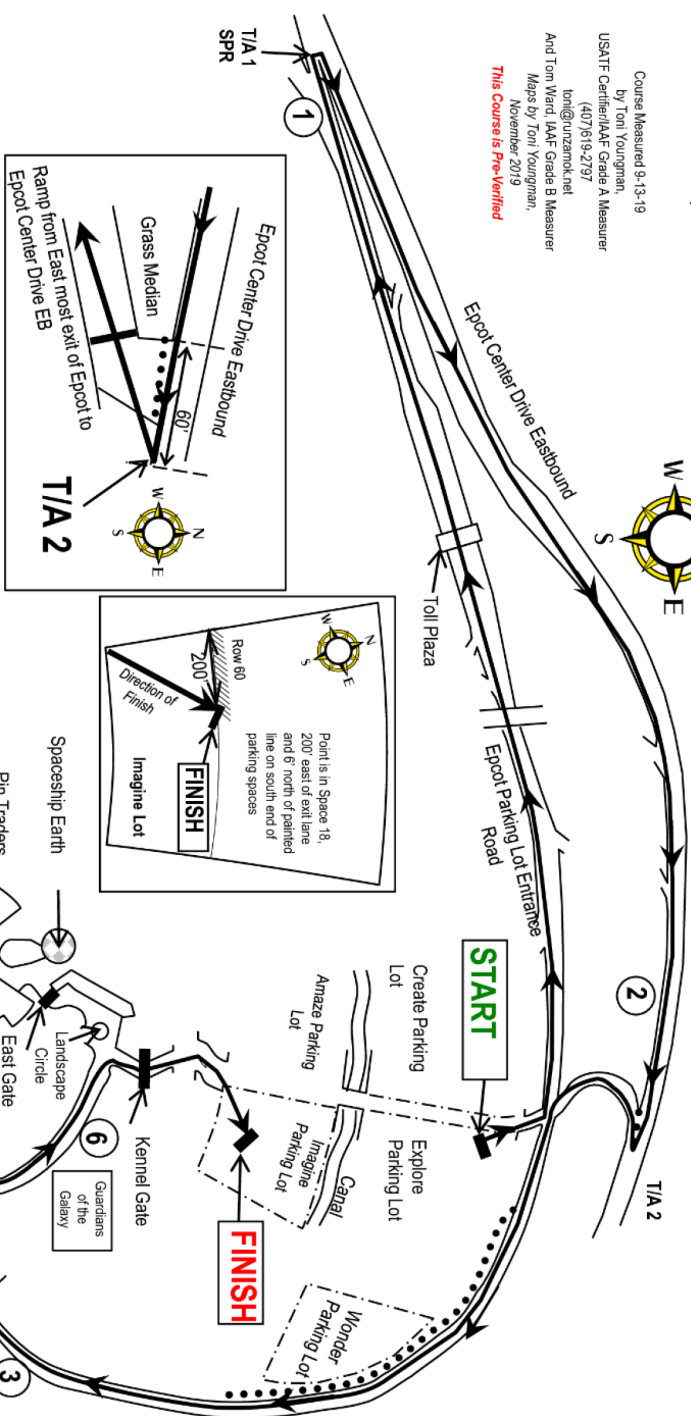
Date: January 8, 2020

Justin Kuo - USATF/RRTC Certifier - 39 Oakland Rd, Brookline MA 02445
(617) 487-4463 - jkuo+certifier@usatfne.org

Epcot 10k

Lake Buena Vista, Florida

Course Measured 9-13-19
 by Toni Youngman
 USATF Certified/IAAF Grade A Measurer
 (407)619-2797
 ton@unzannok.net
 And Tom Ward, IAAF Grade B Measurer
 Maps by Toni Youngman,
 November 2019
This course is Pre-Verified



KEY POINTS

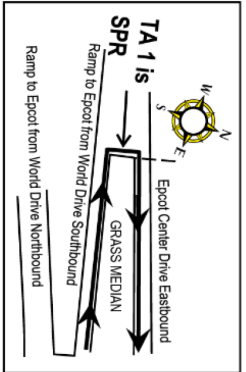
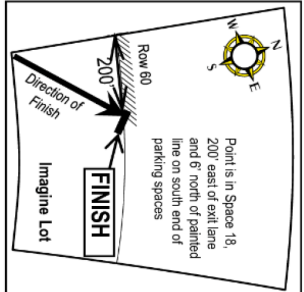
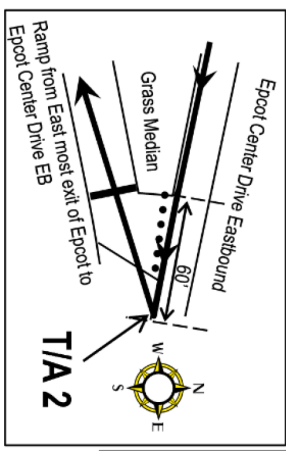
START IS IN THE EPCOT EXPLORE PARKING LOT, FACING NORTH. POINT IS SOUTH OF THE THIRD PARKING SPACE OF ROW 80, EAST OF WEST END OF LOT. POINT IS 2' SOUTH OF SOUTH PAINTED LINE OF THE ROW AND 19.4' EAST OF THE STOP BAR AT THE WEST END OF THE DRIVING LANE. **FINISH** IS IN THE EPCOT IMAGINE PARKING LOT, FACING NORTHEAST. POINT IS 200' EAST OF THE EXIT LANE OF THE PARKING LOT, AT THE SOUTH SIDE OF ROW 60. AT THE 18TH PARKING SPACE FROM THE WEST END OF THE ROW, AND 6' NORTH OF THE SOUTH EDGE OF THE SOLID LINE OF THE ROW.

1 MILE IS ON THE NORTH SIDE OF EPCOT ENTRY ROAD TO AUTO PLAZA, FACING WEST. POINT IS 7' WEST OF LINE WITH LP NL37.

TURNAROUND 1 STARTS ON EPCOT CENTER DRIVE RAMP FROM WORLD DRIVE SOUTHBOUND/AUTO PLAZA ENTRANCE ROAD, AND ROLLS TO EPCOT CENTER DRIVE EASTBOUND. POINT IS SPR AROUND MEDIAN.

2 MILE IS ON THE SOUTH SIDE OF EPCOT CENTER DRIVE EASTBOUND, FACING EAST. POINT IS 95' WEST OF (BEFORE) LIGHT POLE E56.

TURNAROUND 2 IS ON THE SOUTH SIDE OF DRIVING LANES OF EPCOT CENTER DRIVE EASTBOUND, FACING EAST AND ROLLING SOUTH TO FACE WEST AND INTO THE EAST MOST EXIT RAMP FROM EPCOT PARKING LOTS AND WOODPECKER LANE. POINT IS 60' EAST OF (AFTER) THE END OF THE GRASS MEDIAN THAT SPLITS THE EXIT LANE AND EPCOT CENTER DRIVE.



3 MILE IS ON THE WEST SIDE OF WOODPECKER LANE, FACING SOUTH. POINT IS 11' SOUTH OF (AFTER) SOUTH MOST SPEED TABLE.

SR IS ON THE NORTH SIDE OF OVERPASS ROAD, FACING WEST. POINT IS 47' WEST OF (AFTER) LINE WITH WEST END OF STOP BAR ON WOODPECKER LANE.

4 MILE POINT IS IN EPCOT, IN WORLD SHOWCASE, AT MOROCCO PAVILION, FACING WEST. POINT IS 102.7' WEST OF (AFTER) CENTER OF BATHROOMS AT MOROCCO.

5 MILE IS ON DISNEY'S BOARDWALK AT BEACH CLUB, FACING EAST. POINT IS 94.8' WEST OF (BEFORE) WEST EDGE OF STEPS TO BATHROOM FOR THE 'QUIET POOL'. POINT IS ALSO 5' WEST OF (BEFORE) LARGE RED FIREHYDRANT.

6 MILE IS IN BACKSTAGE EPCOT ON SOUTH SIDE OF AVENUE OF THE STARS, FACING WEST. POINT IS 50' WEST OF (AFTER) THE WEST FACING SIDE OF 'GUARDIANS OF THE GALAXY' BUILDING.

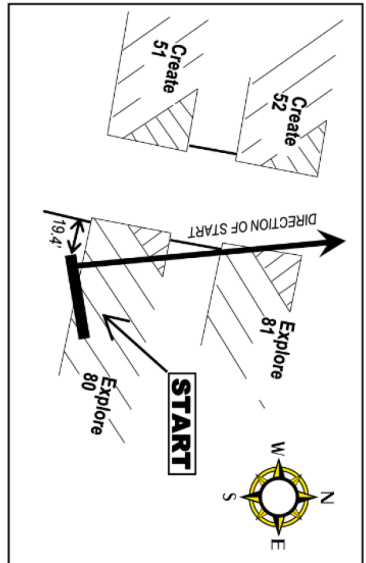
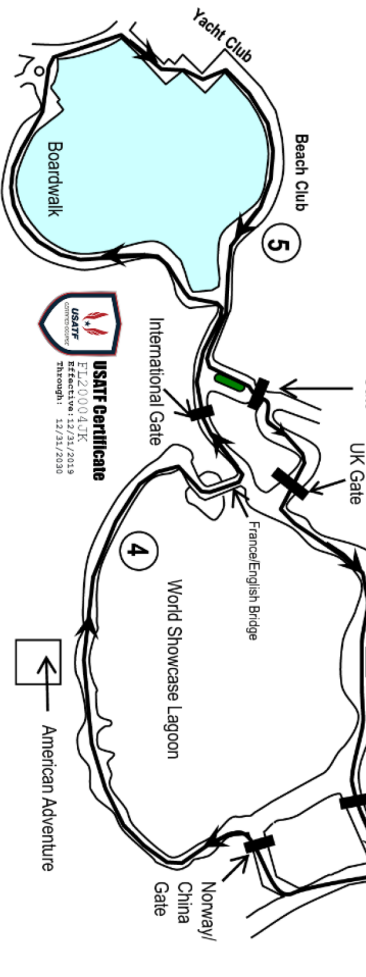
START IS IN THE EPCOT EXPLORE PARKING LOT, FACING NORTH. POINT IS SOUTH OF THE THIRD PARKING SPACE OF ROW 80, EAST OF WEST END OF LOT. POINT IS 2' SOUTH OF SOUTH PAINTED LINE OF THE ROW AND 19.4' EAST OF THE STOP BAR AT THE WEST END OF THE DRIVING LANE. **FINISH** IS IN THE EPCOT IMAGINE PARKING LOT, FACING NORTHEAST. POINT IS 200' EAST OF THE EXIT LANE OF THE PARKING LOT, AT THE SOUTH SIDE OF ROW 60. AT THE 18TH PARKING SPACE FROM THE WEST END OF THE ROW, AND 6' NORTH OF THE SOUTH EDGE OF THE SOLID LINE OF THE ROW.

1 MILE IS ON THE NORTH SIDE OF EPCOT ENTRY ROAD TO AUTO PLAZA, FACING WEST. POINT IS 7' WEST OF LINE WITH LP NL37.

TURNAROUND 1 STARTS ON EPCOT CENTER DRIVE RAMP FROM WORLD DRIVE SOUTHBOUND/AUTO PLAZA ENTRANCE ROAD, AND ROLLS TO EPCOT CENTER DRIVE EASTBOUND. POINT IS SPR AROUND MEDIAN.

2 MILE IS ON THE SOUTH SIDE OF EPCOT CENTER DRIVE EASTBOUND, FACING EAST. POINT IS 95' WEST OF (BEFORE) LIGHT POLE E56.

TURNAROUND 2 IS ON THE SOUTH SIDE OF DRIVING LANES OF EPCOT CENTER DRIVE EASTBOUND, FACING EAST AND ROLLING SOUTH TO FACE WEST AND INTO THE EAST MOST EXIT RAMP FROM EPCOT PARKING LOTS AND WOODPECKER LANE. POINT IS 60' EAST OF (AFTER) THE END OF THE GRASS MEDIAN THAT SPLITS THE EXIT LANE AND EPCOT CENTER DRIVE.



Epcot 10k

Supplemental Map 1 of 13

KEY POINTS

START IS IN THE EPCOT EXPLORE PARKING LOT, FACING NORTH. POINT IS SOUTH OF THE THIRD PARKING SPACE OF ROW 80, EAST OF WEST END OF LOT. POINT IS 2' SOUTH OF SOUTH PAINTED LINE OF THE ROW AND 19.4' EAST OF THE STOP BAR AT THE WEST END OF THE DRIVING LANE.

FINISH IS IN THE EPCOT IMAGINE PARKING LOT, FACING NORTHEAST. POINT IS 200' EAST OF THE EXIT LANE OF THE PARKING LOT, AT THE SOUTH SIDE OF ROW 60, AT THE 18TH PARKING SPACE FROM THE WEST END OF THE ROW, AND 6' NORTH OF THE SOUTH EDGE OF THE SOLID LINE OF THE ROW.

1 MILE IS ON THE NORTH SIDE OF EPCOT ENTRY ROAD TO AUTO PLAZA, FACING WEST. POINT IS 7' WEST OF LINE WITH LP NL37.

TURNAROUND 1 STARTS ON EPCOT CENTER DRIVE RAMP FROM WORLD DRIVE SOUTHBOUND/AUTO PLAZA ENTRANCE ROAD, AND ROLLS TO EPCOT CENTER DRIVE EASTBOUND. POINT IS SPR AROUND MEDIAN.

2 MILE IS ON THE SOUTH SIDE OF EPCOT CENTER DRIVE EASTBOUND, FACING EAST. POINT IS 95' WEST OF (BEFORE) LIGHT POLE E96.

TURNAROUND 2 IS ON THE SOUTH SIDE OF DRIVING LANES OF EPCOT CENTER DRIVE EASTBOUND, FACING EAST AND ROLLING SOUTH TO FACE WEST AND INTO THE EAST MOST EXIT RAMP FROM EPCOT PARKING LOTS AND WOODPECKER LANE. POINT IS 60' EAST OF (AFTER) THE END OF THE GRASS MEDIAN THAT SPLITS THE EXIT LANE AND EPCOT CENTER DRIVE.

3 MILE IS ON THE WEST SIDE OF WOODPECKER LANE, FACING SOUTH. POINT IS 11' SOUTH OF (AFTER) SOUTH MOST SPEED TABLE.

5K IS ON THE NORTH SIDE OF OVERPASS ROAD, FACING WEST. POINT IS 47' WEST OF (AFTER) LINE WITH WEST END OF STOP BAR ON WOODPECKER LANE.

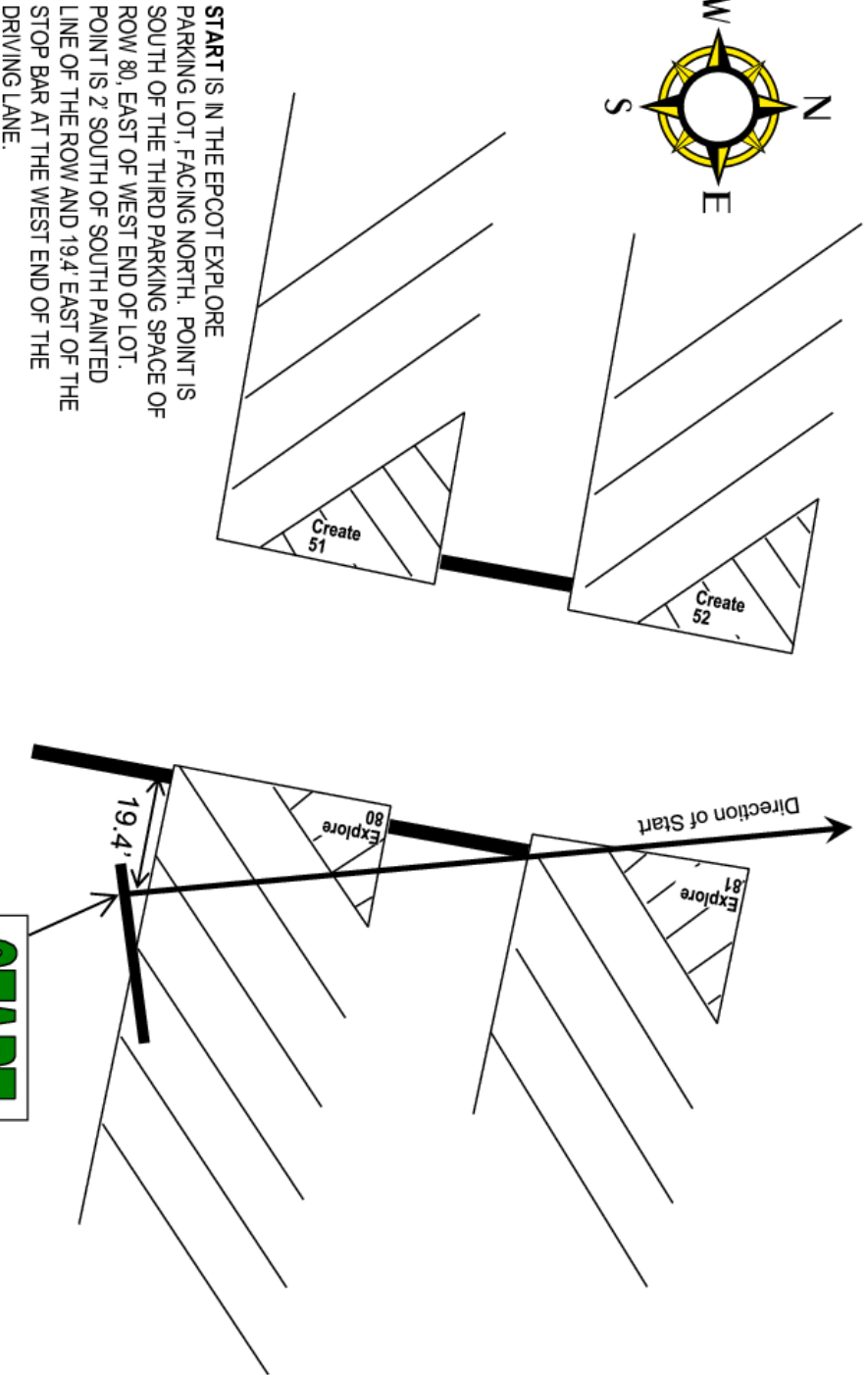
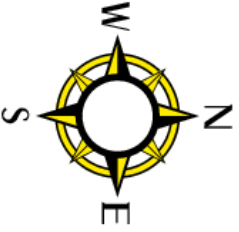
4 MILE POINT IS IN EPCOT, IN WORLD SHOWCASE, AT MOROCCO PAVILLION, FACING WEST. POINT IS 102.7' WEST OF (AFTER) CENTER OF BATHROOMS AT MOROCCO.

5 MILE IS ON DISNEY'S BOARDWALK AT BEACH CLUB, FACING EAST. POINT IS 94.8' WEST OF (BEFORE) WEST EDGE OF STEPS TO BATHROOM FOR THE "QUIET POOL". POINT IS ALSO 5' WEST OF (BEFORE) LARGE RED FIREHYDRANT.

6 MILE IS IN BACKSTAGE EPCOT ON SOUTH SIDE OF AVENUE OF THE STARS, FACING WEST. POINT IS 50' WEST OF (AFTER) THE WEST FACING SIDE OF "GUARDIANS OF THE GALAXY" BUILDING.

Epcot 10K START

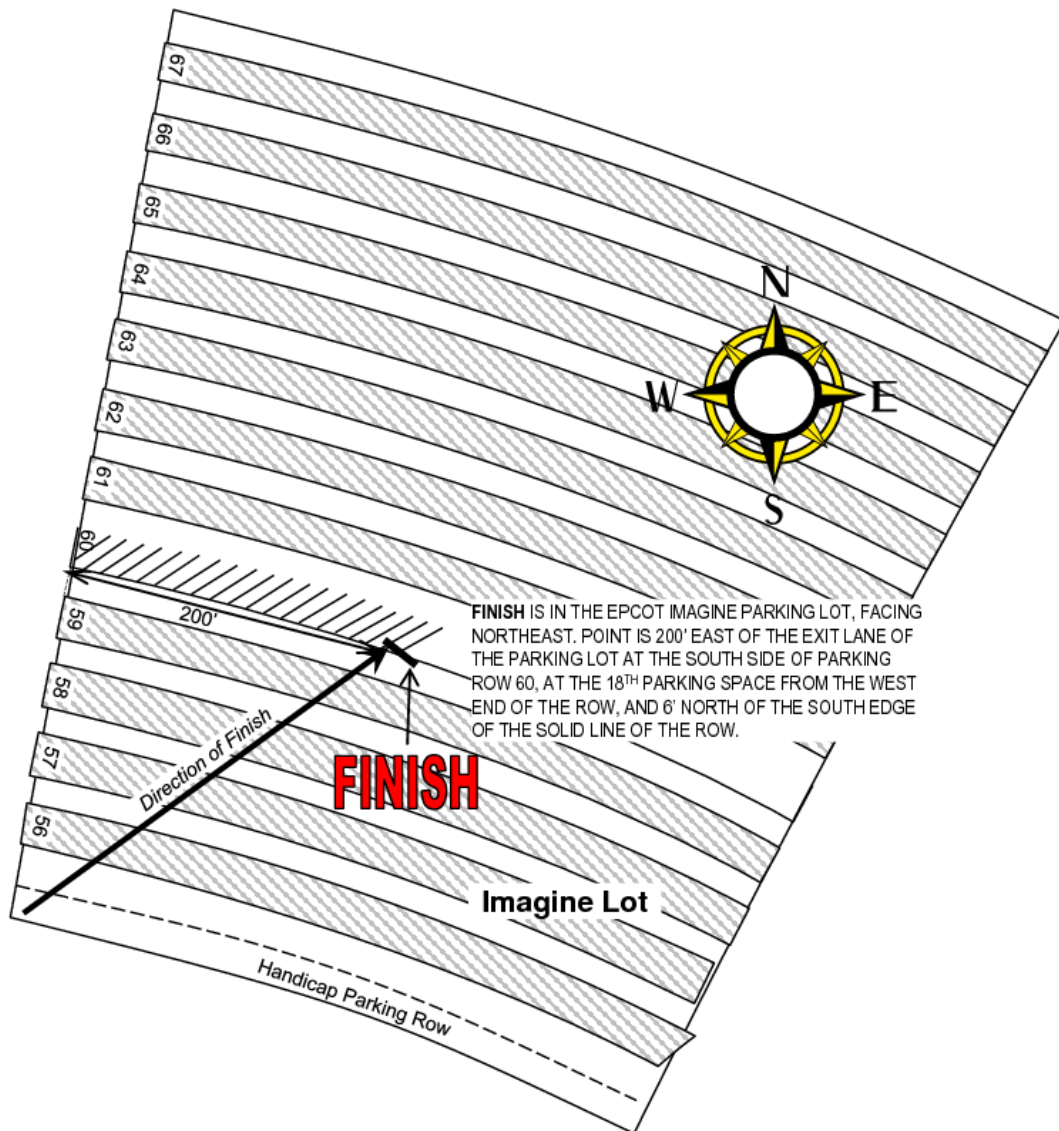
Supplemental Map 2 of 13



START

Epcot 10k FINISH

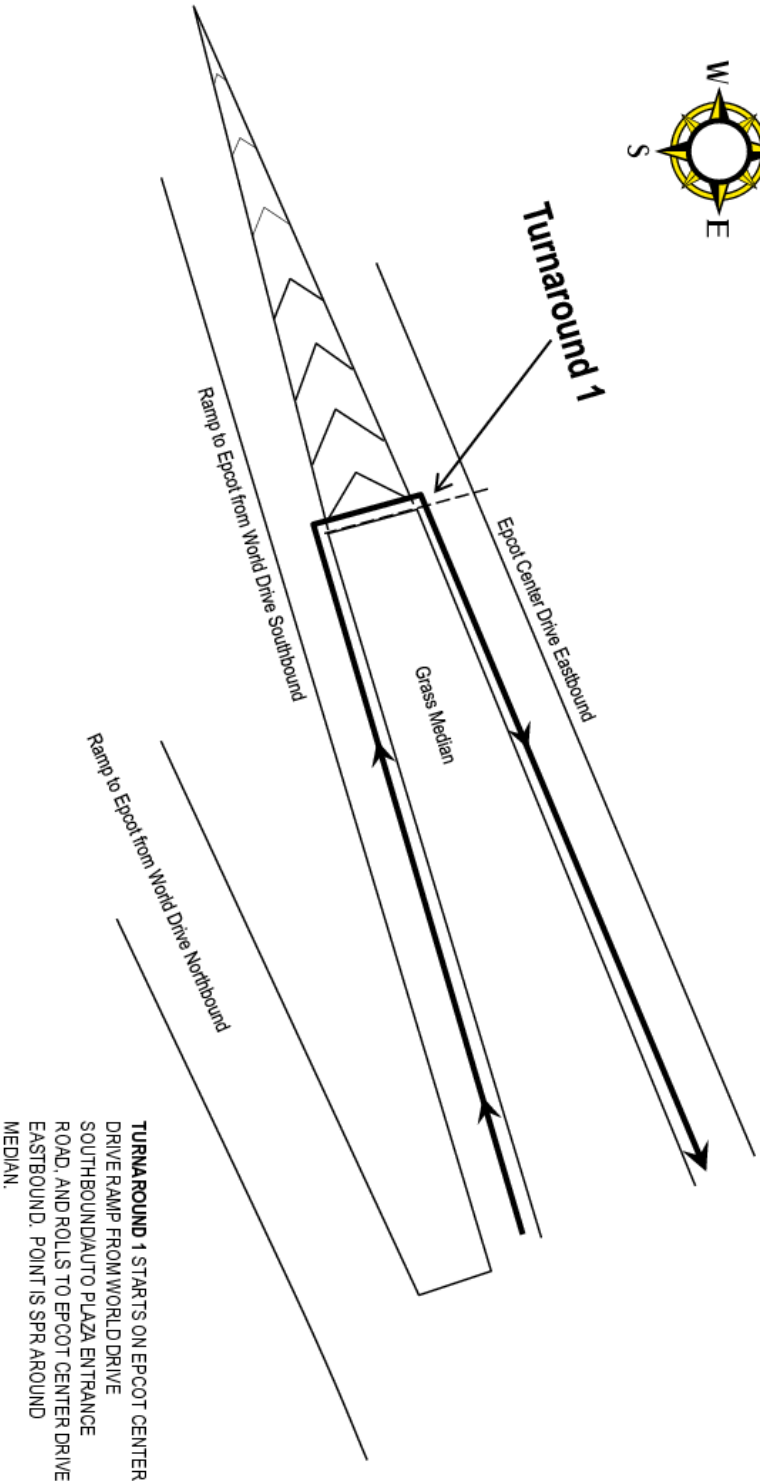
Supplemental Map 3 of 13



FINISH IS IN THE EPCOT IMAGINE PARKING LOT, FACING NORTHEAST. POINT IS 200' EAST OF THE EXIT LANE OF THE PARKING LOT AT THE SOUTH SIDE OF PARKING ROW 60, AT THE 18TH PARKING SPACE FROM THE WEST END OF THE ROW, AND 6' NORTH OF THE SOUTH EDGE OF THE SOLID LINE OF THE ROW.

Epcot 10k TURNAROUND 1 MAP

Supplemental Map 4 of 13

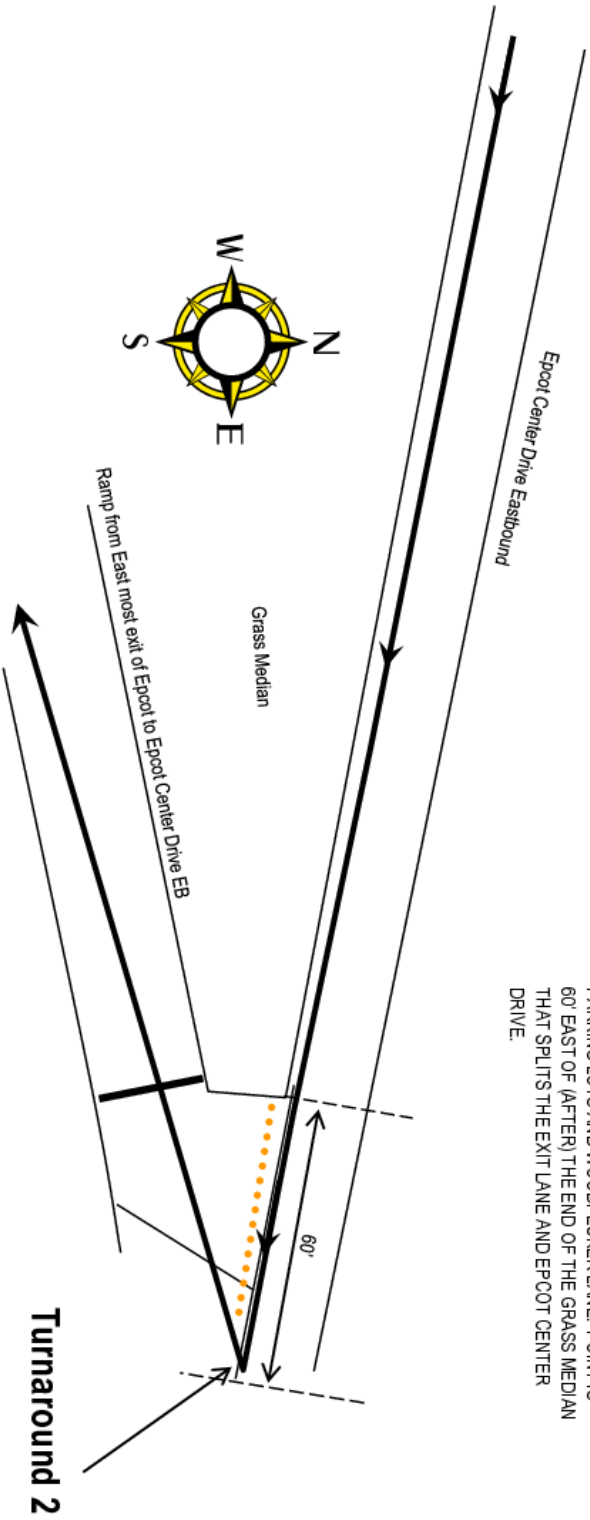


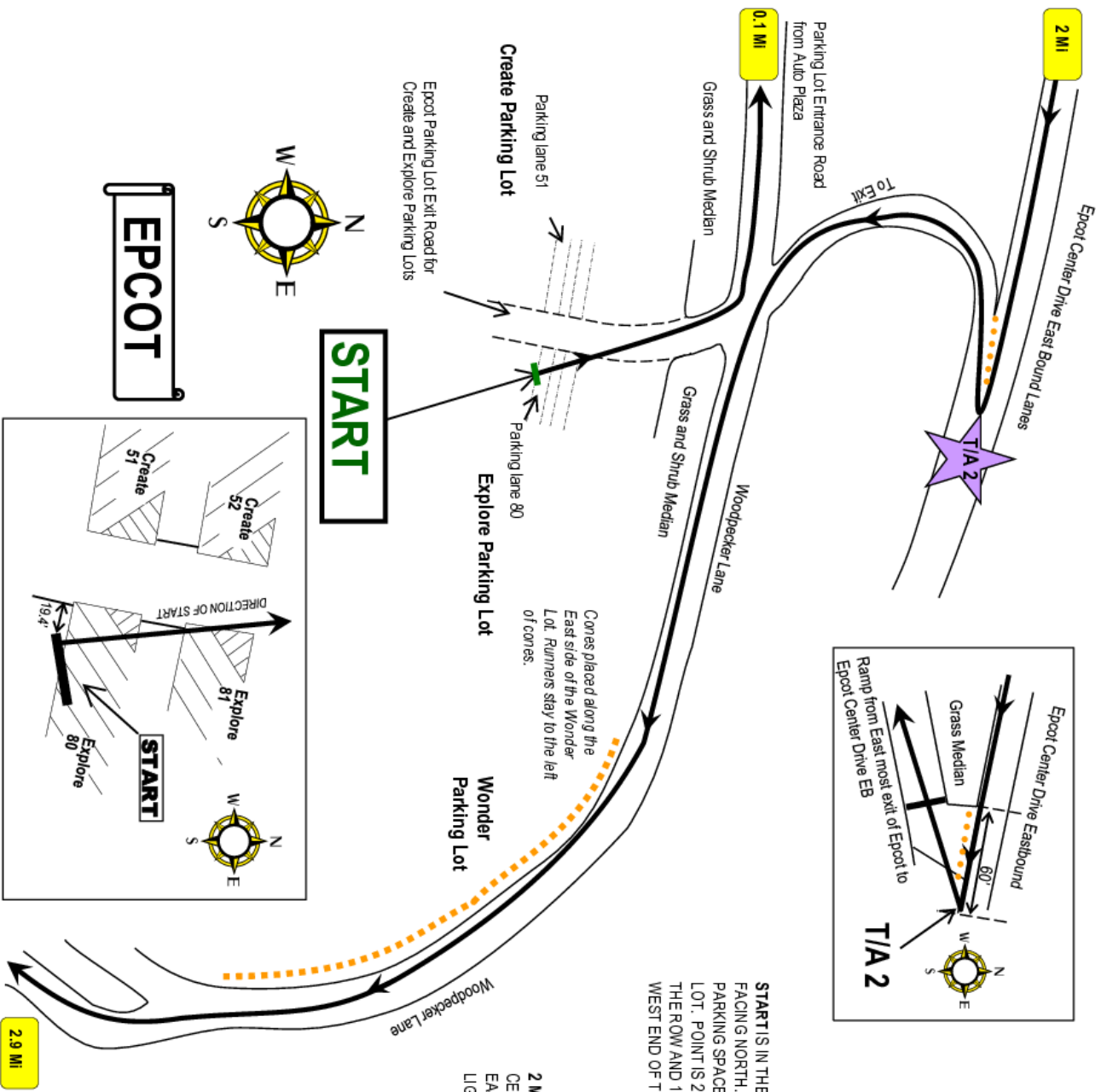
TURNAROUND 1 STARTS ON EPCOT CENTER DRIVE RAMP FROM WORLD DRIVE SOUTHBOUND/AUTO PLAZA ENTRANCE ROAD, AND ROLLS TO EPCOT CENTER DRIVE EASTBOUND. POINT IS SPR AROUND MEDIAN.

Epcot 10k TURNAROUND 2 MAP

Supplemental Map 5 of 13

TURNAROUND 2 IS ON THE SOUTH SIDE OF DRIVING LANES OF EPCOT CENTER DRIVE EASTBOUND, FACING EAST AND ROLLING SOUTH TO FACE WEST AND INTO THE EAST MOST EXIT RAMP FROM EPCOT PARKING LOTS AND WOODPECKER LANE. POINT IS 60' EAST OF (AFTER) THE END OF THE GRASS MEDIAN THAT SPLITS THE EXIT LANE AND EPCOT CENTER DRIVE.





Epcot 10K

Start to 0.1 miles
2 Miles to 2.9 Miles

Supplemental Map 6 of 13

START IS IN THE EPCOT EXPLORE PARKING LOT, FACING NORTH. POINT IS SOUTH OF THE THIRD PARKING SPACE OF ROW 80, EAST OF WEST END OF LOT. POINT IS 2' SOUTH OF SOUTH PAINTED LINE OF THE ROW AND 19.4' EAST OF THE STOP BAR AT THE WEST END OF THE DRIVING LANE.

2 MILE IS ON THE SOUTH SIDE OF EPCOT CENTER DRIVE EASTBOUND, FACING EAST. POINT IS 95' WEST OF (BEFORE) LIGHT POLE E96.

TURNAROUND 2 IS ON THE SOUTH SIDE OF DRIVING LANES OF EPCOT CENTER DRIVE EASTBOUND, FACING EAST AND ROLLING SOUTH TO FACE WEST AND INTO THE EAST MOST EXIT RAMP FROM EPCOT PARKING LOTS AND WOODPECKER LANE. POINT IS 60' EAST OF (AFTER) THE END OF THE GRASS MEDIAN THAT SPLITS THE EXIT LANE AND EPCOT CENTER DRIVE.

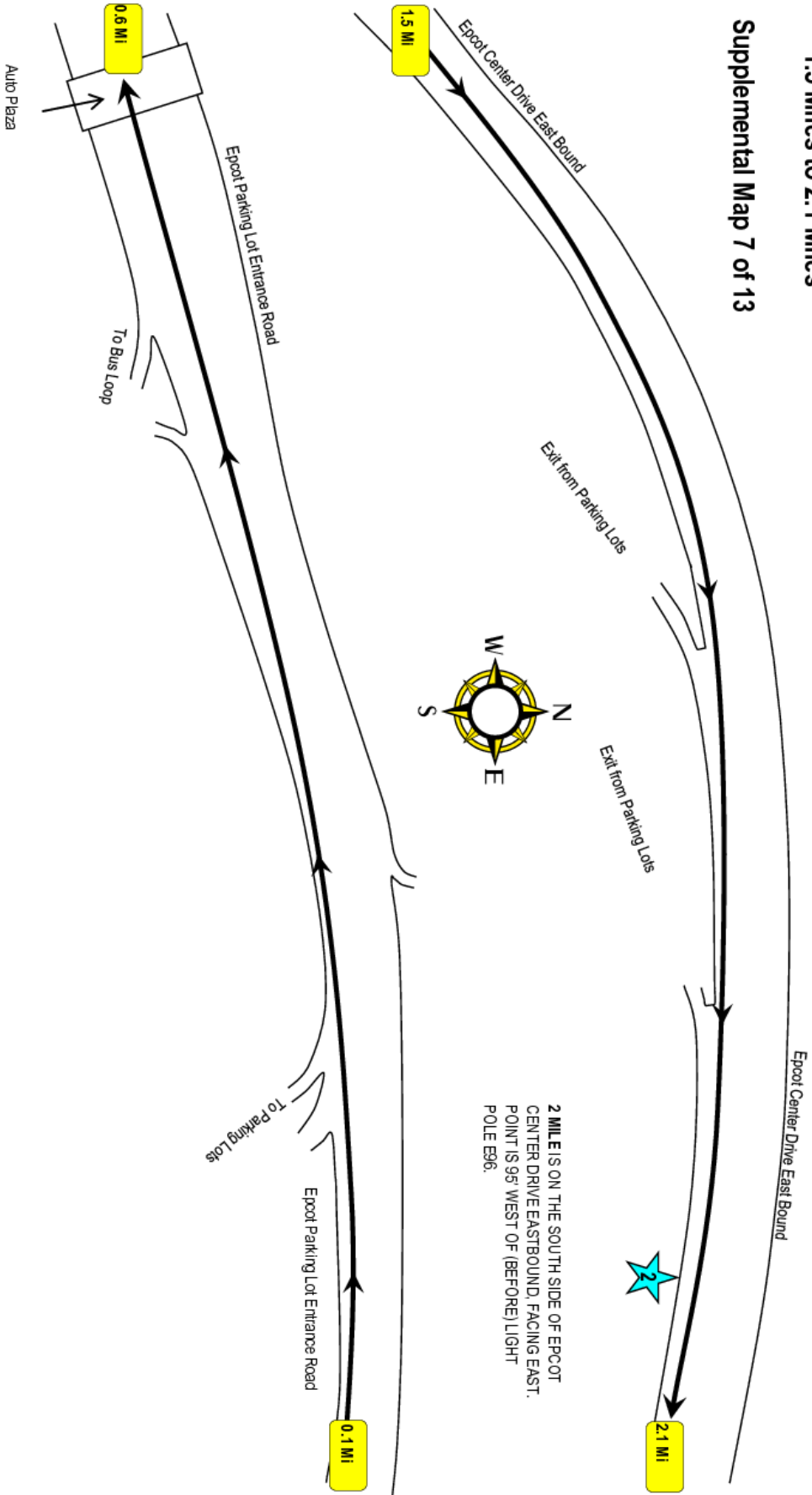
Measured 9-13-19
by Toni Youngman, IAAF AUSATF Certified
toni@unozamok.net
(407) 819-2797

Tom Ward, IAAF B
Maps Created by Toni Youngman 09/18

Epcot 10k

0.1 Miles to 0.6 miles
1.5 Miles to 2.1 Miles

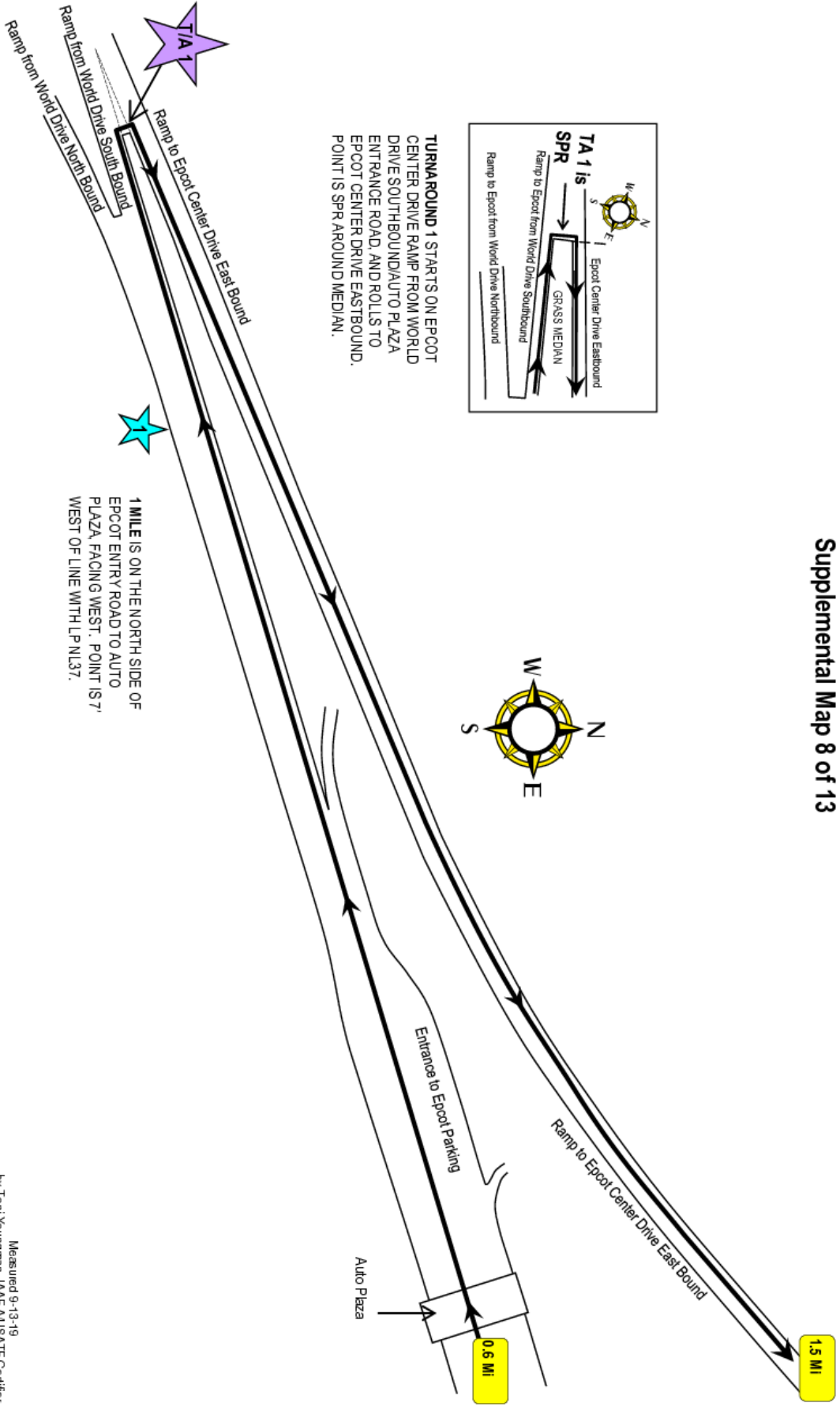
Supplemental Map 7 of 13



Epcot 10K

0.6 Miles to 1.5 Miles

Supplemental Map 8 of 13



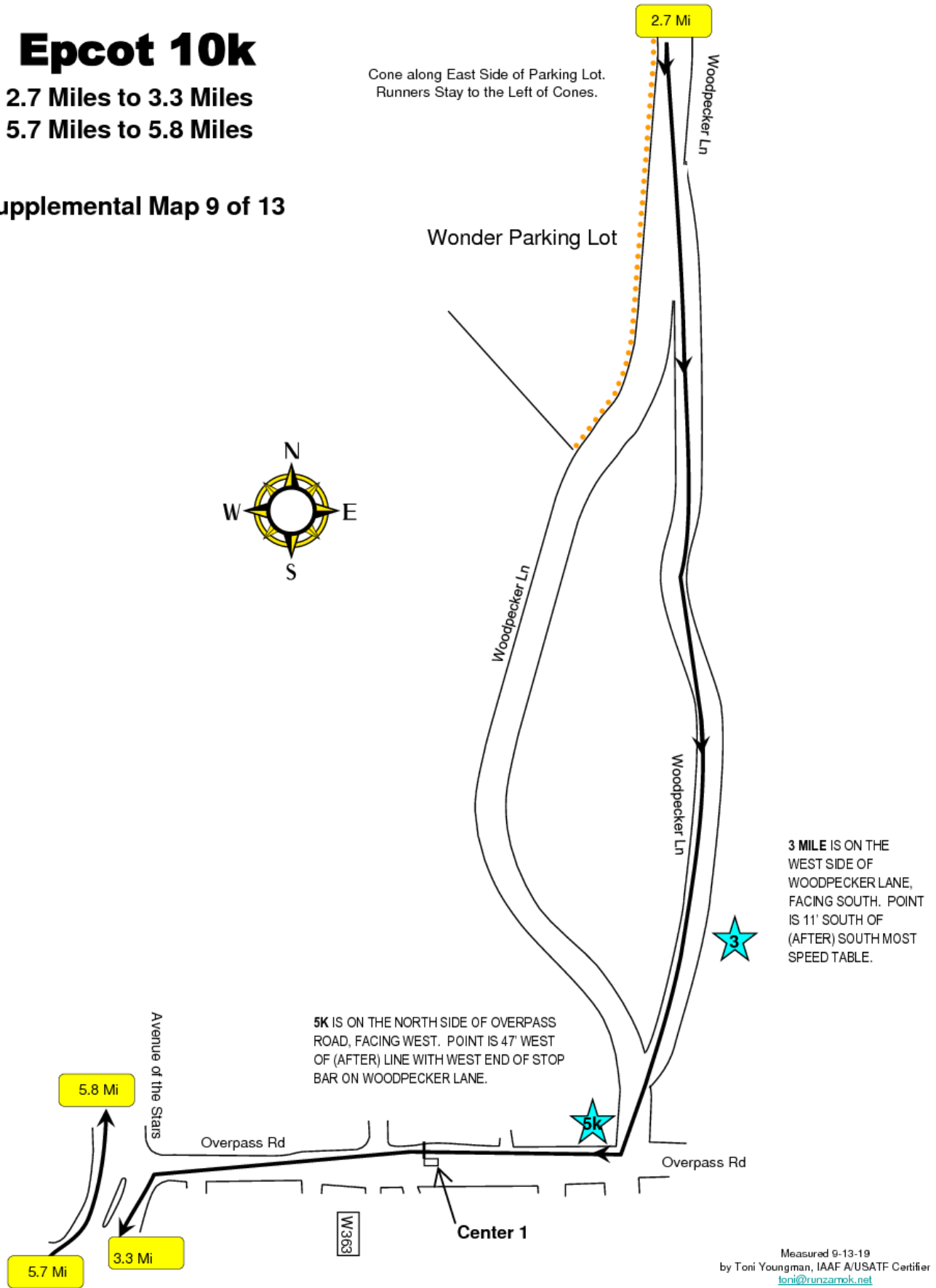
Measured 9-13-19
 by Toni Youngman, IAAF AUSATF Certified
toni@unozamok.net
 (407) 819-2797
 Tom Ward, IAAF B
 Maps Created by Toni Youngman 09/18

Epcot 10k

2.7 Miles to 3.3 Miles

5.7 Miles to 5.8 Miles

Supplemental Map 9 of 13



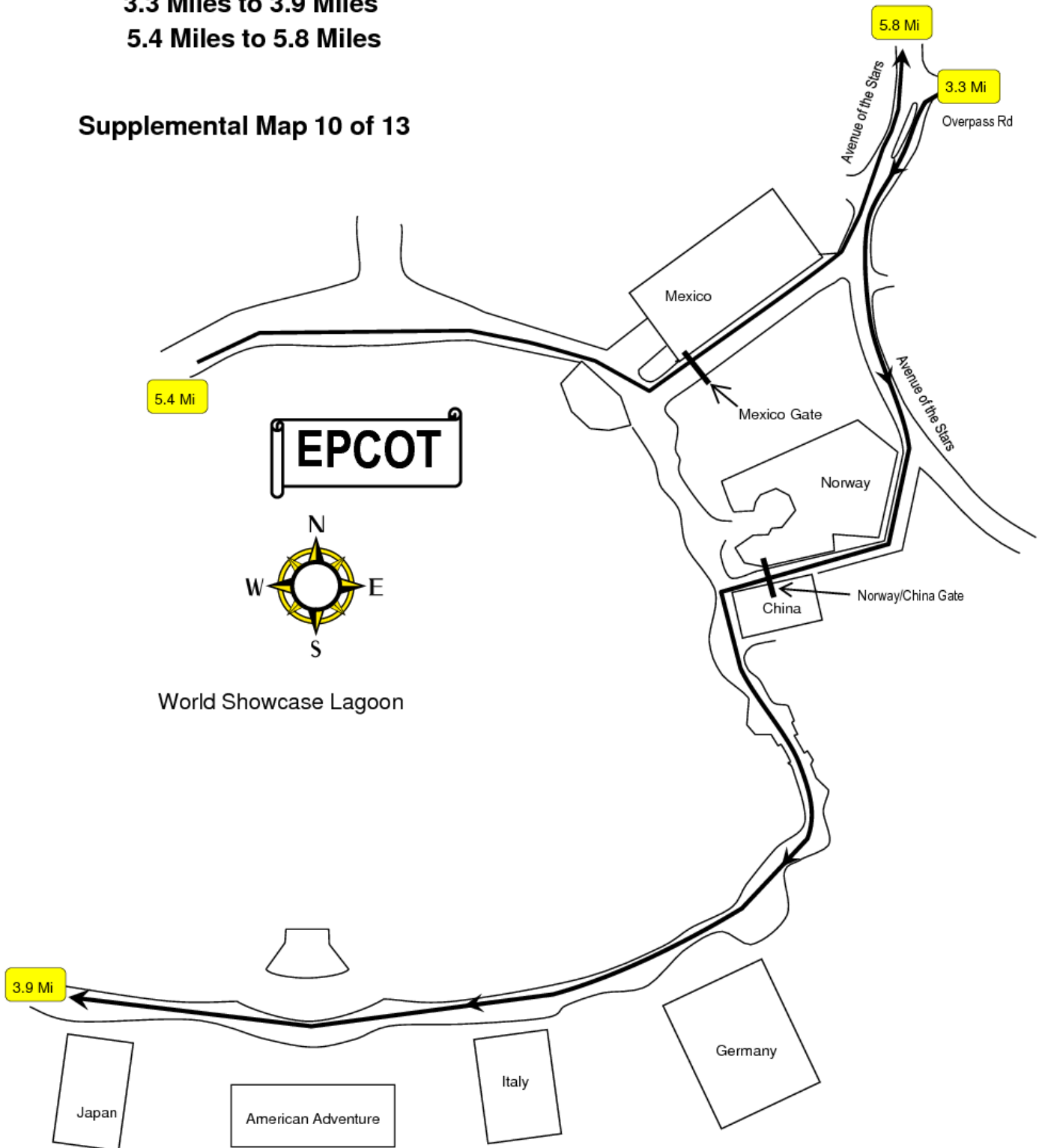
Measured 9-13-19
by Toni Youngman, IAAF A/USATF Certifier
toni@runzamok.net
(407)619-2797
Tom Ward, IAAF B
Maps Created by Toni Youngman 09/18

Epcot 10k

3.3 Miles to 3.9 Miles

5.4 Miles to 5.8 Miles

Supplemental Map 10 of 13

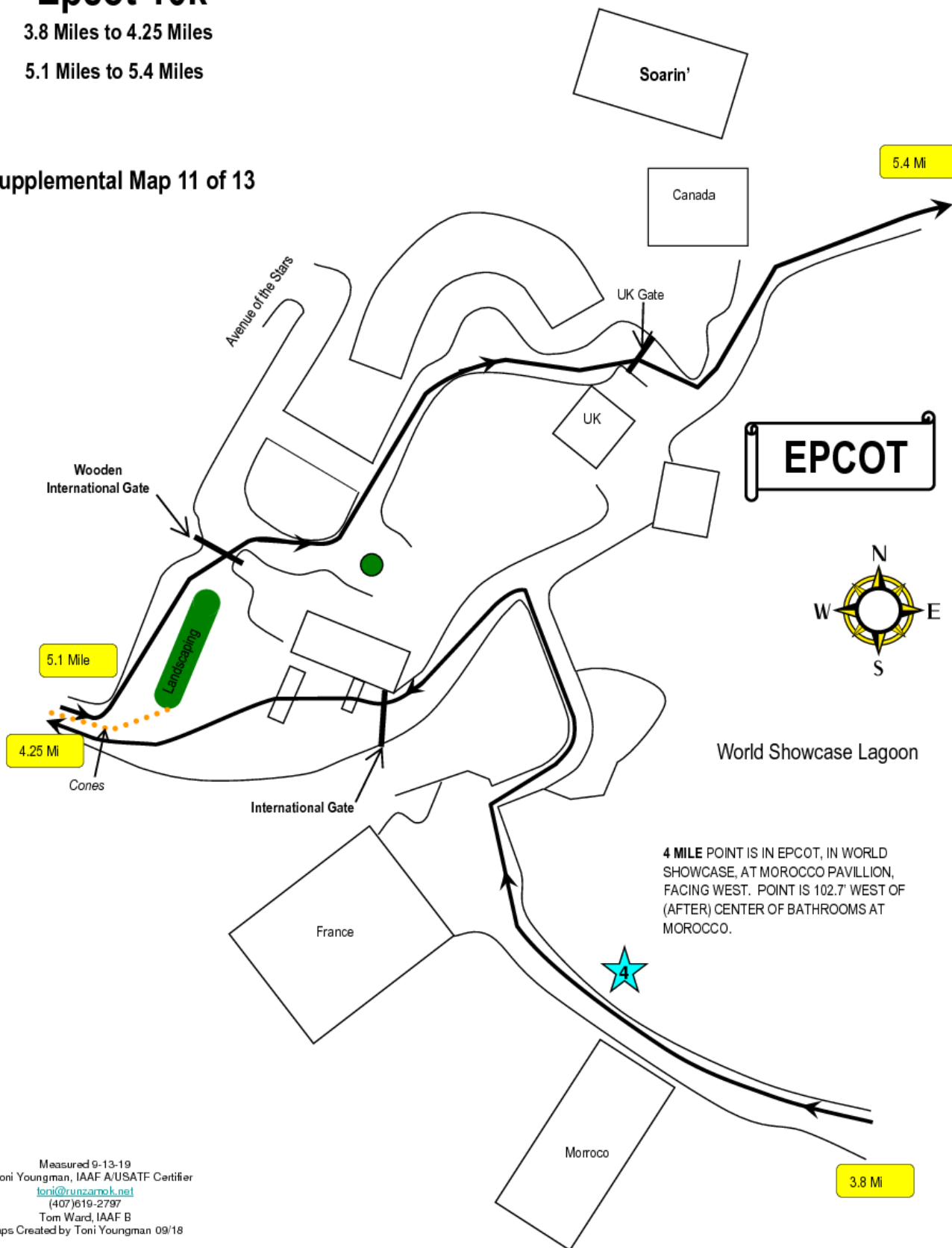


Epcot 10k

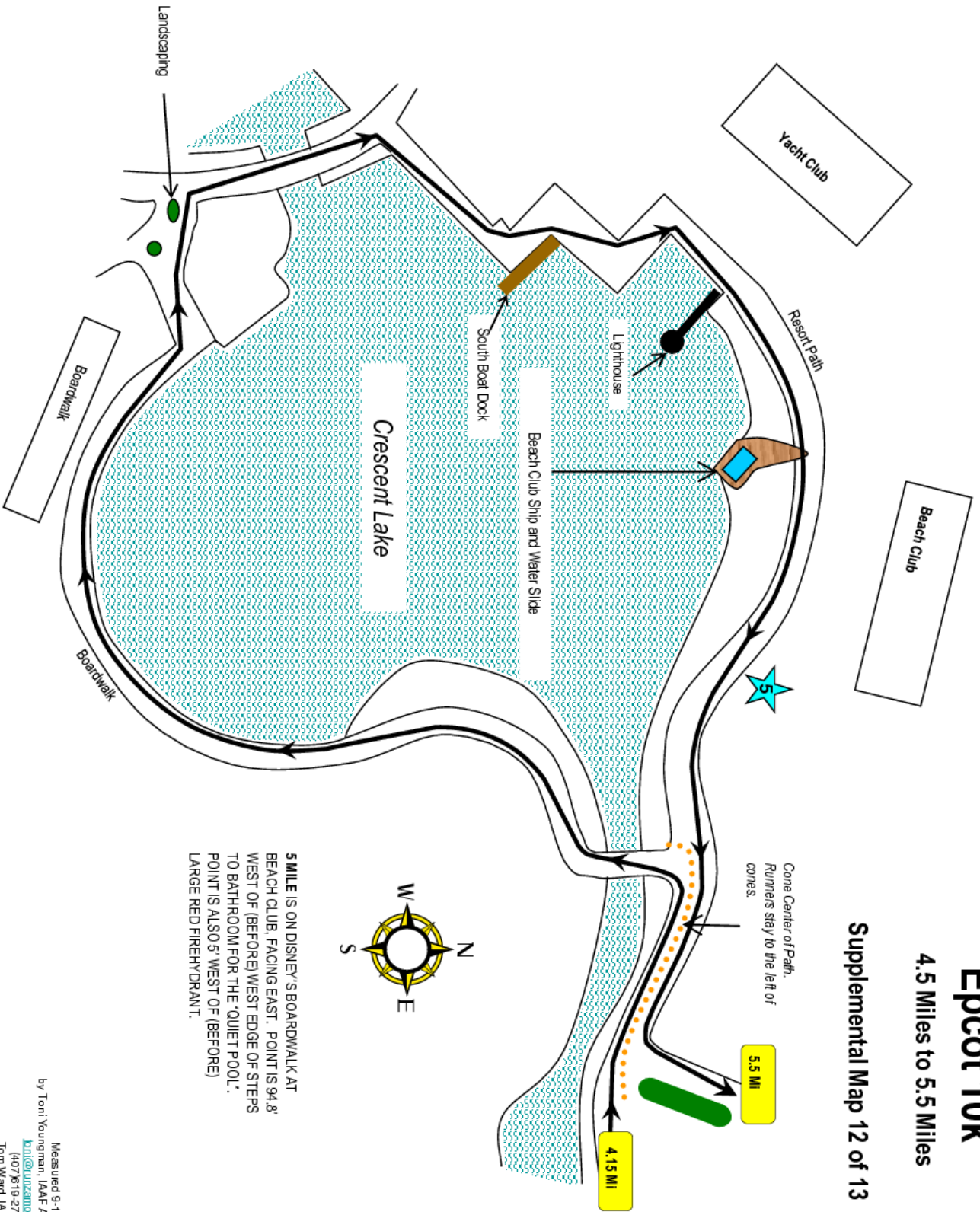
3.8 Miles to 4.25 Miles

5.1 Miles to 5.4 Miles

Supplemental Map 11 of 13



4 MILE POINT IS IN EPCOT, IN WORLD SHOWCASE, AT MOROCCO PAVILLION, FACING WEST. POINT IS 102.7' WEST OF (AFTER) CENTER OF BATHROOMS AT MOROCCO.



Epcot 10K

4.5 Miles to 5.5 Miles

Supplemental Map 12 of 13

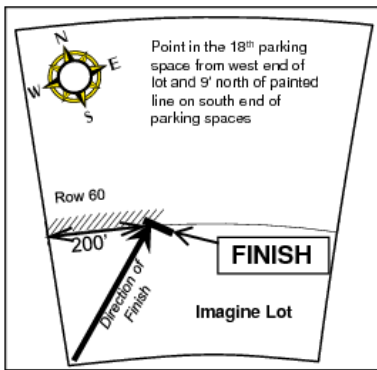
5 MILE IS ON DISNEY'S BOARDWALK AT BEACH CLUB, FACING EAST. POINT IS 94.8' WEST OF (BEFORE) WEST EDGE OF STEPS TO BATHROOM FOR THE 'QUIET POOL'. POINT IS ALSO 5' WEST OF (BEFORE) LARGE RED FIREHYDRANT.



Epcot 10k

3.25 to 3.35 Miles
5.4 Miles to FINISH

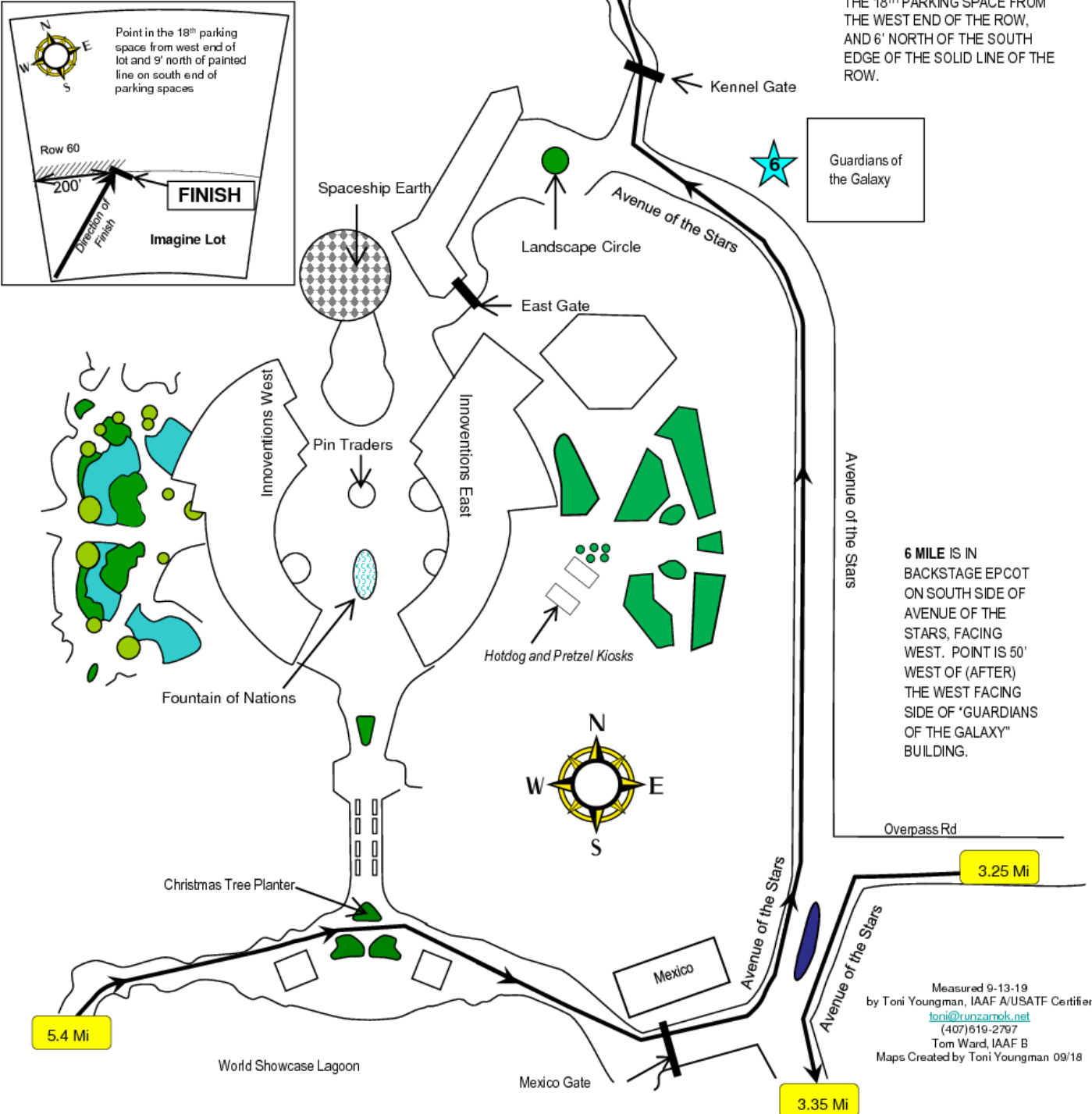
Supplemental Map 13 of 13



FINISH

Amaze Parking Lot
Imagine Parking Lot

FINISH IS IN THE EPCOT IMAGINE PARKING LOT, FACING NORTHEAST. POINT IS 200' EAST OF THE EXIT LANE OF THE PARKING LOT AT THE SOUTH SIDE OF PARKING ROW 60, AT THE 18TH PARKING SPACE FROM THE WEST END OF THE ROW, AND 6' NORTH OF THE SOUTH EDGE OF THE SOLID LINE OF THE ROW.



6 MILE IS IN BACKSTAGE EPCOT ON SOUTH SIDE OF AVENUE OF THE STARS, FACING WEST. POINT IS 50' WEST OF (AFTER) THE WEST FACING SIDE OF 'GUARDIANS OF THE GALAXY' BUILDING.

Measured 9-13-19
by Toni Youngman, IAAF A/USATF Certifier
toni@runzamo.net
(407)619-2797
Tom Ward, IAAF B
Maps Created by Toni Youngman 09/18